

Plastic model kit containing 662 parts.

Wing span: 989mm Length: 707 mm

1/32  
SCALE



# B-17G Flying Fortress

## Late Production

The Boeing B-17 'Flying Fortress' was one of the U.S.A.'s main four-engine heavy bombers, operating alongside the B-24 Liberator, and the later B-29 Superfortress, in all theatres of World War 2. It's a fact that the B-17 almost never saw its place in history and the defeat of Nazi Germany, as the prototype, known as Model 299, crashed due to pilot error during its evaluation in October 1935. Thankfully, the design had shown such promise during the testing phase, in fact, far exceeding the requirements of the original specification, that further prototypes were ordered despite Boeing losing the original contract with the United States Army Air Corps. It was this further evaluation that saw the type enter active service in 1938. The actual name 'Flying Fortress' was coined by a newspaper hack who witnessed a roll-out of the machine, bristling with guns and turrets, and Boeing realised that this was the sort of propaganda they needed, and trademarked the name. After the initial prototypes, serial production of the B-17 began with the B-17B variant, and underwent a major revision with the introduction of the 'E'. This type featured a substantially redesigned tail and fillet that featured throughout subsequent versions, giving the B-17 its iconic profile. An extra 10ft of length was added to the fuselage. Other refinements included the addition of a tail and dorsal turret, and the addition of a Bendix turret to replace the fixed bathtub type that had

graced previous versions. This was found to be disappointing, and was eventually replaced with the Sperry ball turret that became a permanent feature of all future marques.

Boeing's 'G' incarnation of the Fort, was perhaps the most significant of all types built, and of course, numerous 'F' version modifications were carried over, such as the remotely operated Bendix chin turret that was introduced in the late block series of the 'F'. Differences between the 'G' version and the previous main production 'F' type were the positions of the nose cheek guns to accommodate the remote yolk for the Bendix turret operation, and for late block production of the 'G', the introduction of the Cheyenne tail gunner position which offered a reflector gun sight and much improved field of fire. Unlike the early production blocks of the 'G', the later production blocks introduced staggered waist gun positions for the flexible-mount .50-cal machine guns.

The B-17G was powered by 4 x Wright R-1820-97 "Cyclone" 1200hp turbocharged radial engines that were constantly uprated over the service life of the B-17, and it also carried 13 x .50cal M2 Browning machine guns. A typical long-range mission would see the B-17G carry around 4,500lbs of bombs. Wingspan was 103ft 9in, with a length of 74ft 4in. A crew of 10 was typically carried by all variants of the B-17G.



BE CAREFUL



REMOVE



GLUE TOGETHER



PLEASE WAIT FOR A FEW MINUTES UNTIL DRY



MAKE 2 PIECES



DRILL HOLE



DO NOT GLUE



INSTANT GLUE FOR METAL



BEND



FILL HOLE



SEQUENCE OF WORK



OPTIONAL



USED COLOUR



APPLY DECAL



MARKING OPTION

### CAUTION

When using both glue and paint, do not use these near an open flame, due to the flammable properties of these items.

The symbols provided, such as 'X', refer to the basic colours of parts, although a more comprehensive list is supplied for your use for Tamiya, Mr Hobby and AK-Interactive codes.

When removing parts from sprues, take extreme care. Consider correct tools such as Xuron Sprue Cutters

Please check the symbology on the left and familiarise yourself before building this model kit.

In cooperation with:



[www.ak-interactive.com](http://www.ak-interactive.com)



HK MODELS 01E044

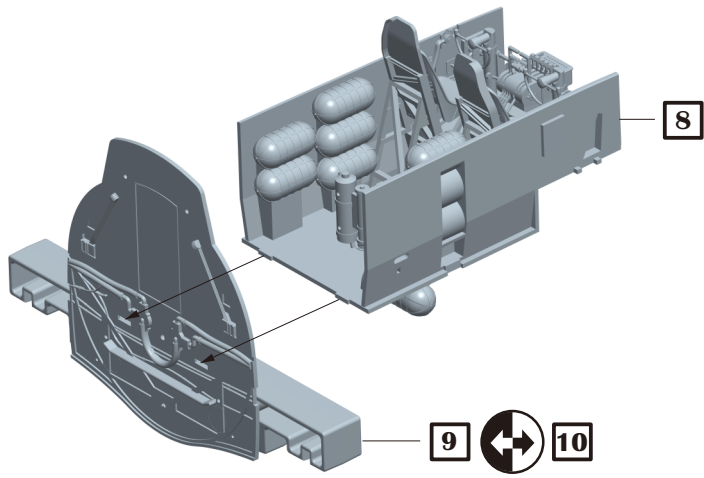
PAGE 01





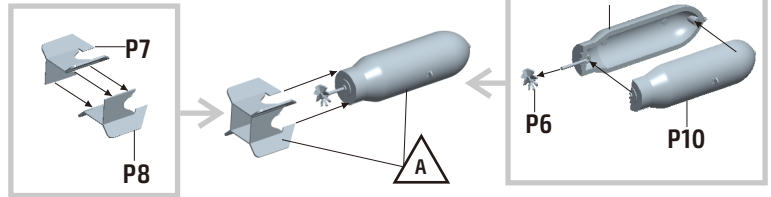


11

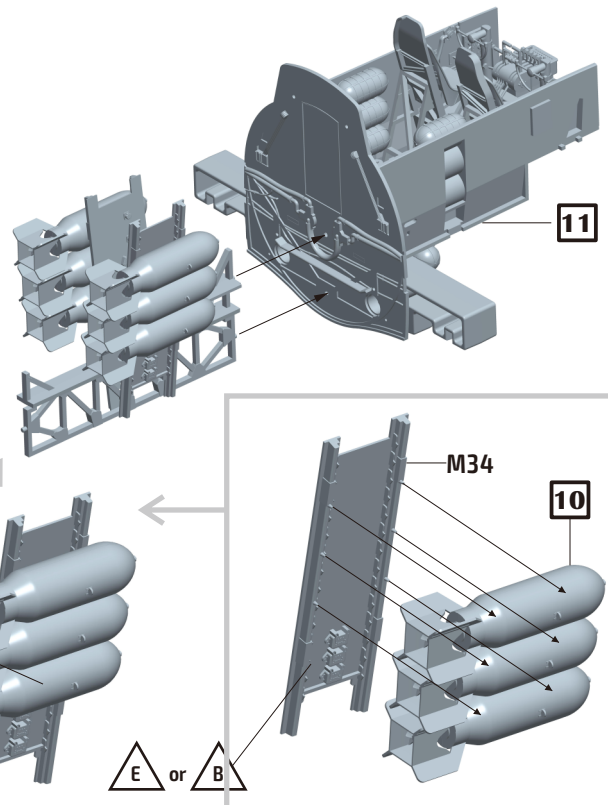


12

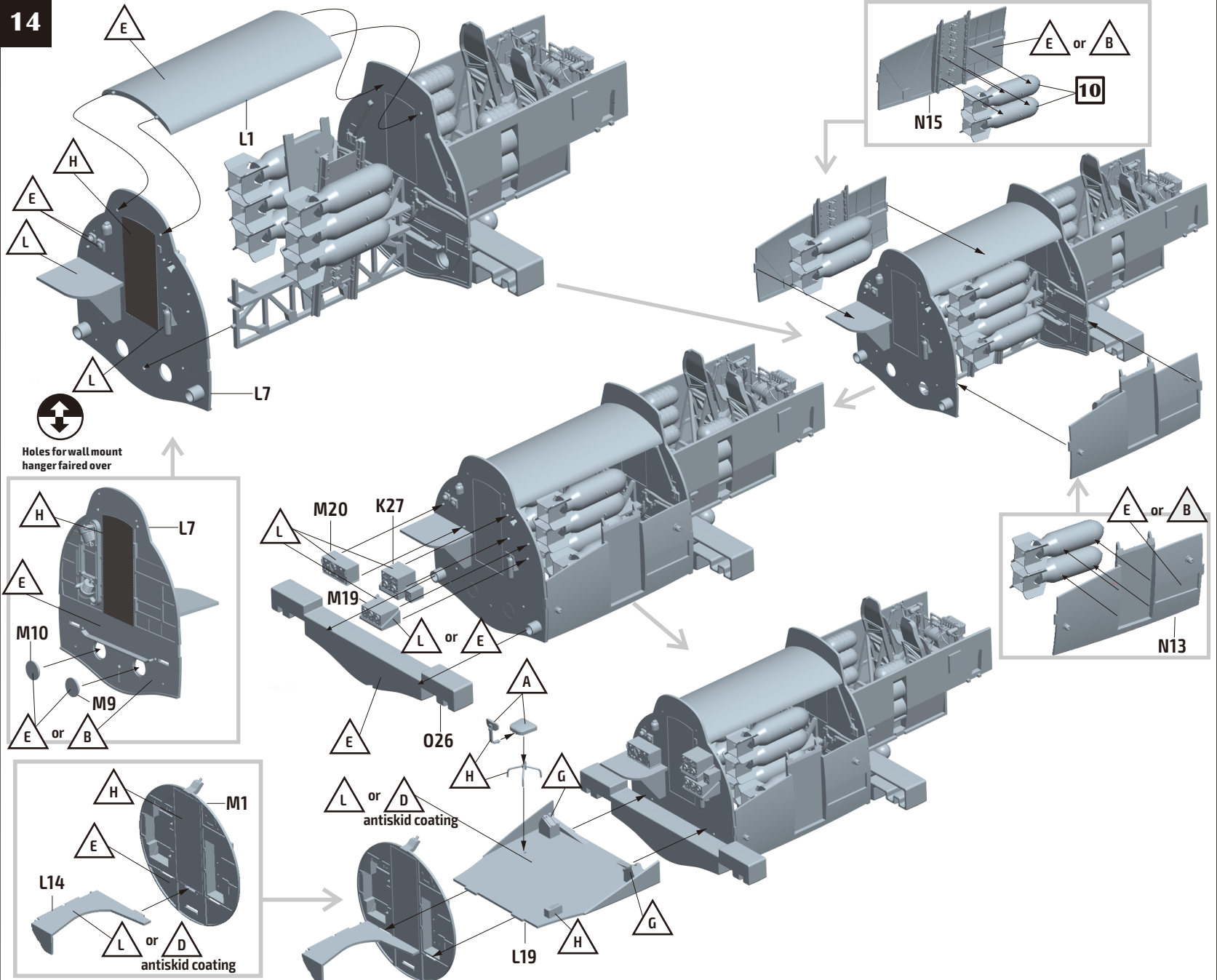
×10 MAKE 10 PIECES



13

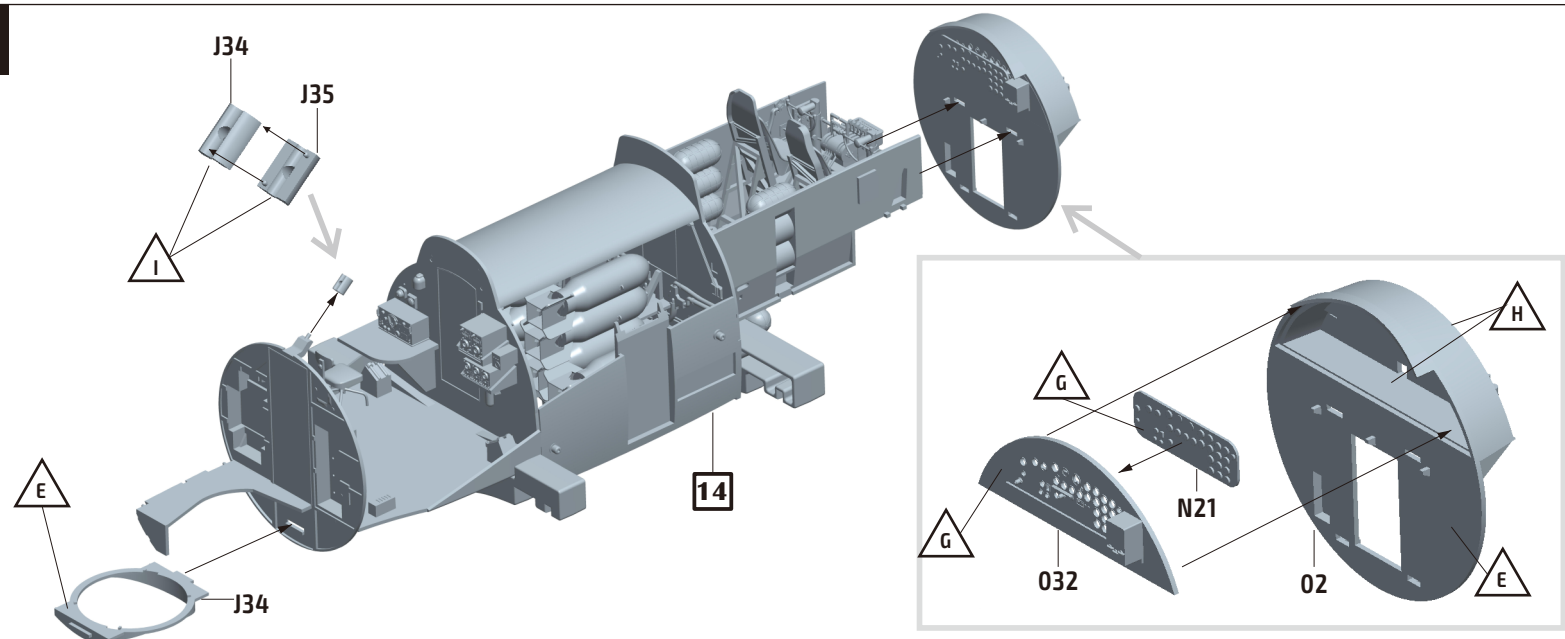


14

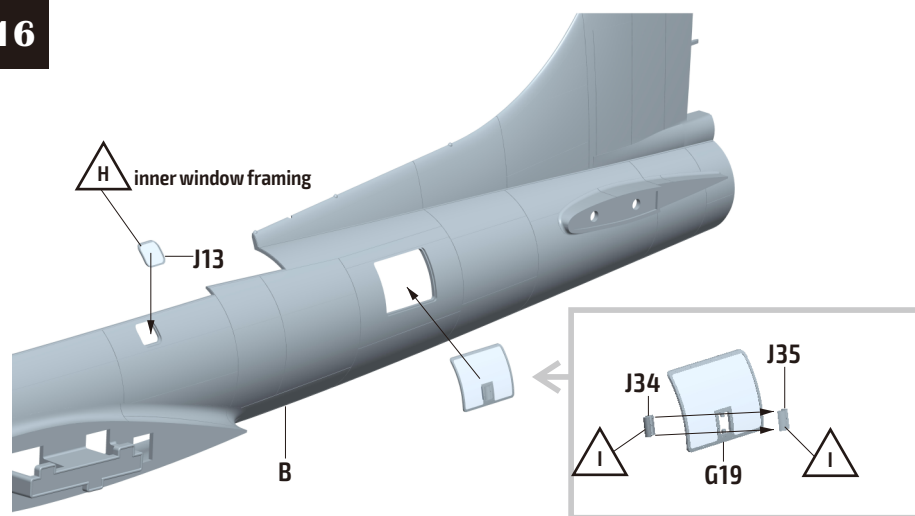




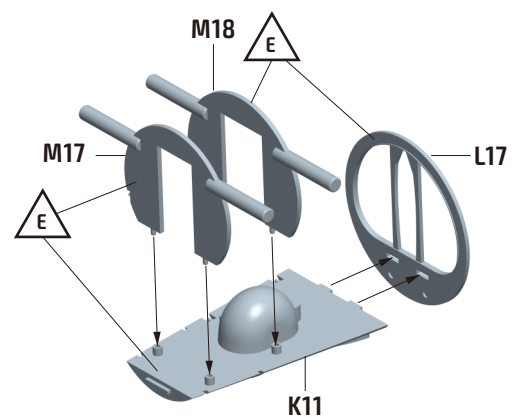
15



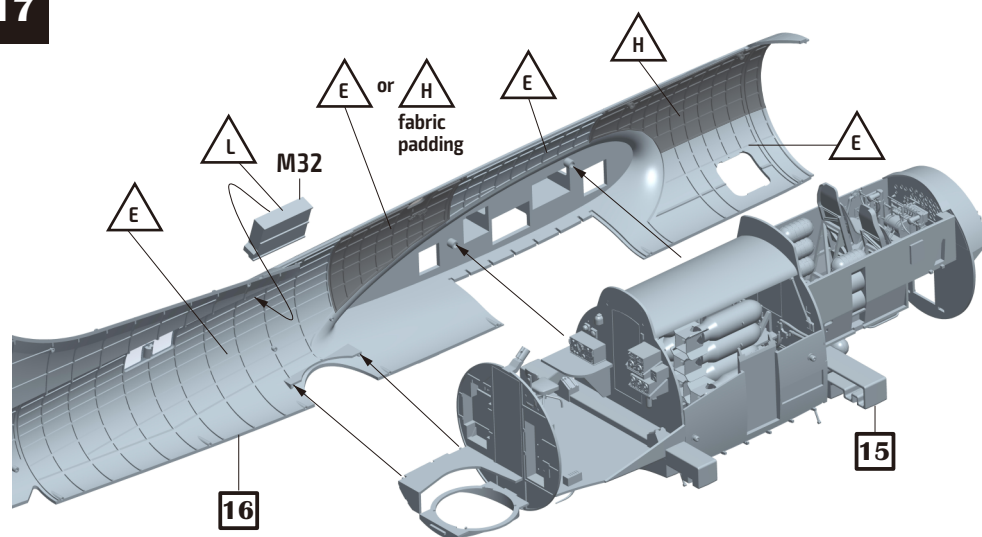
16



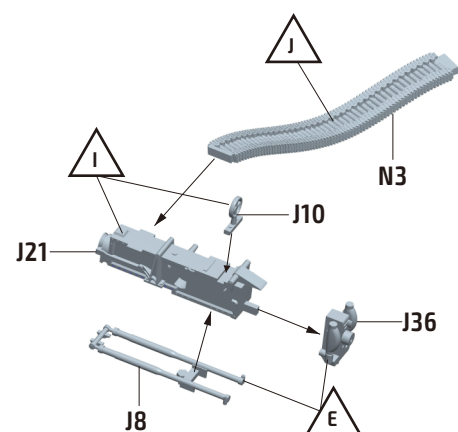
18



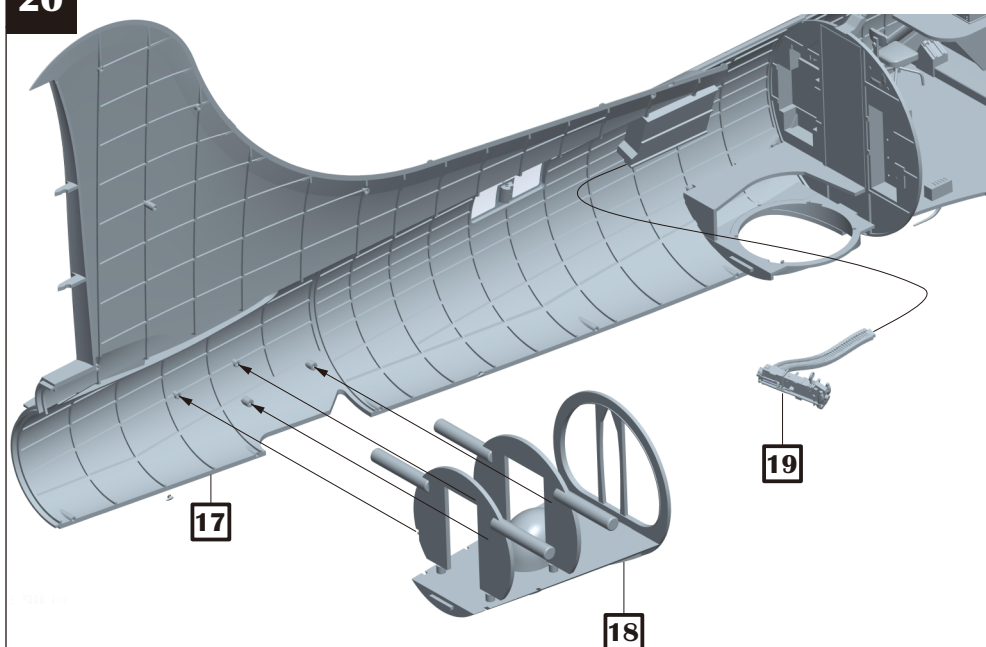
17



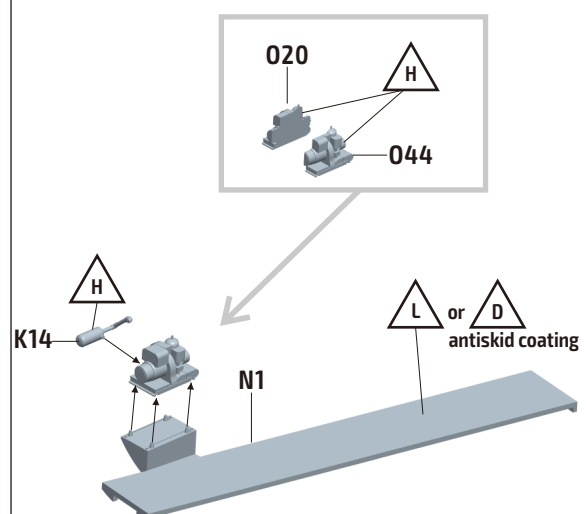
19



20

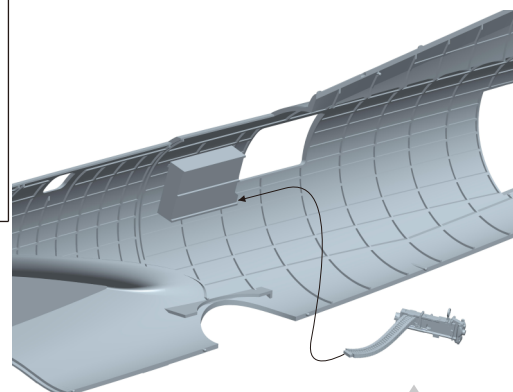
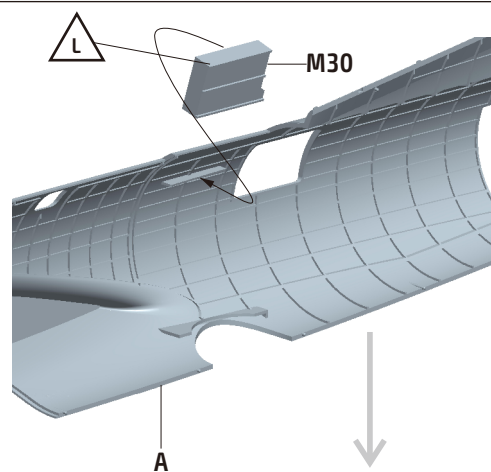
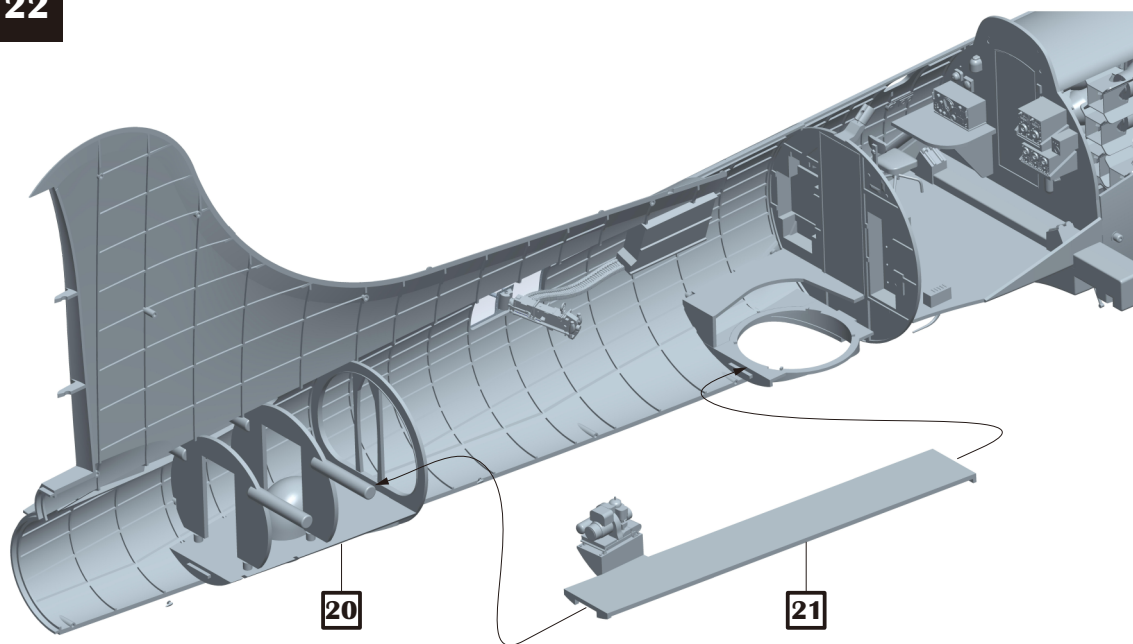


21

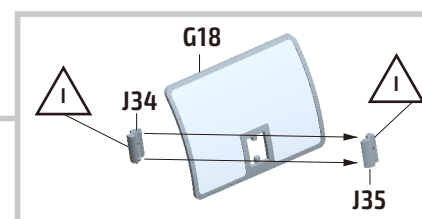
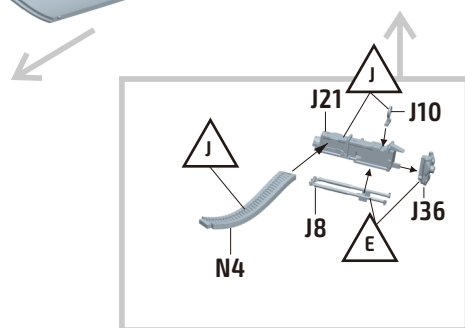
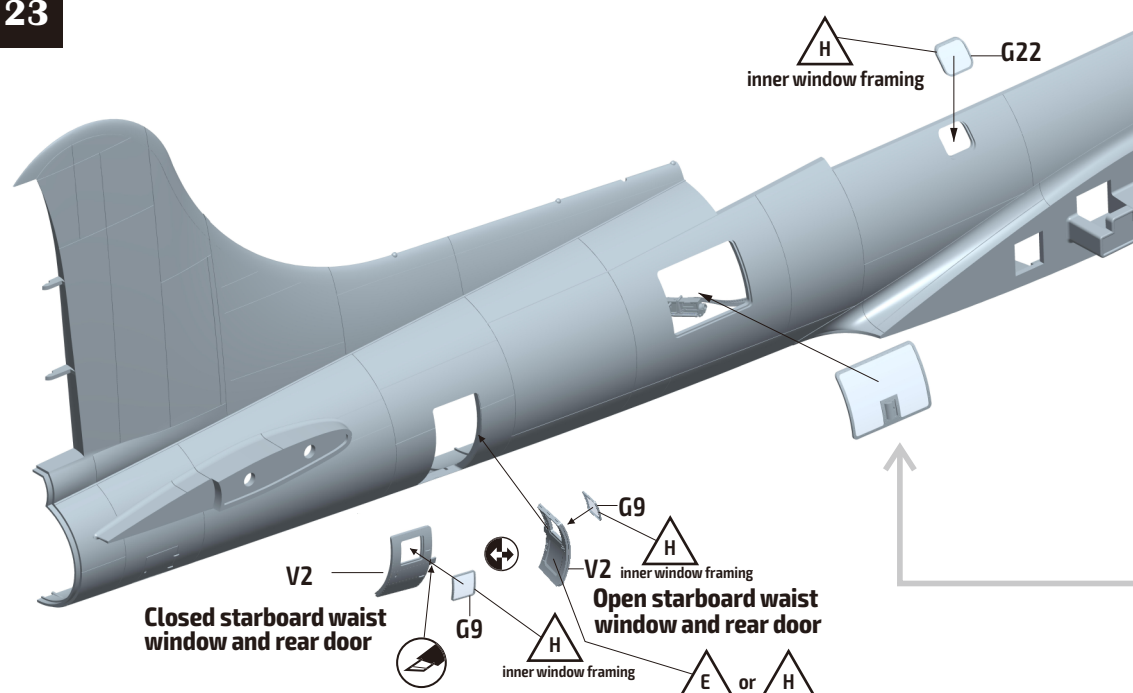




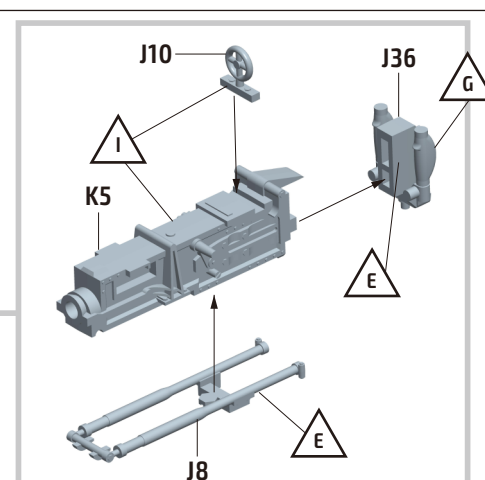
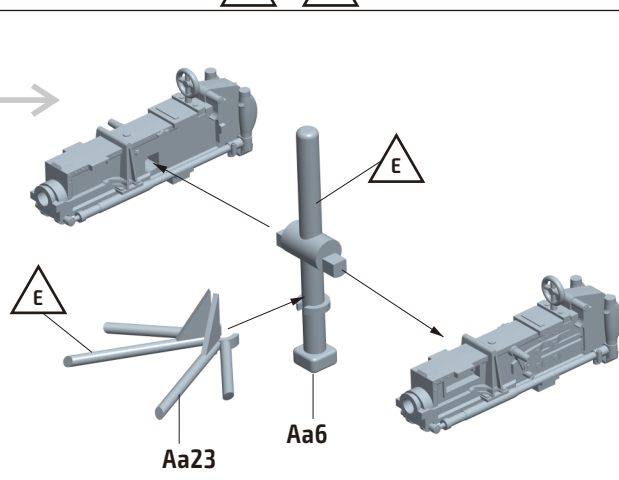
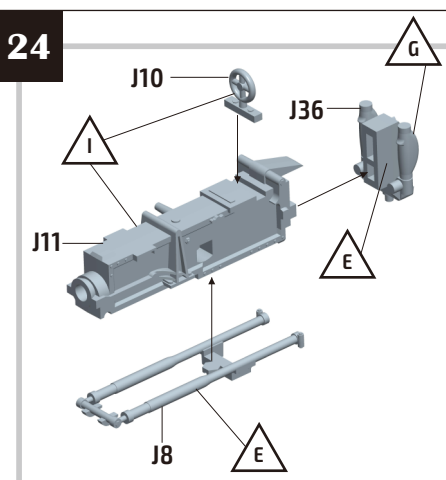
22



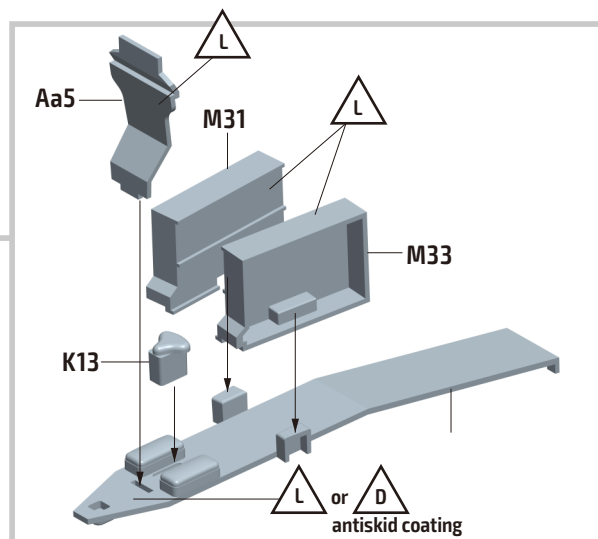
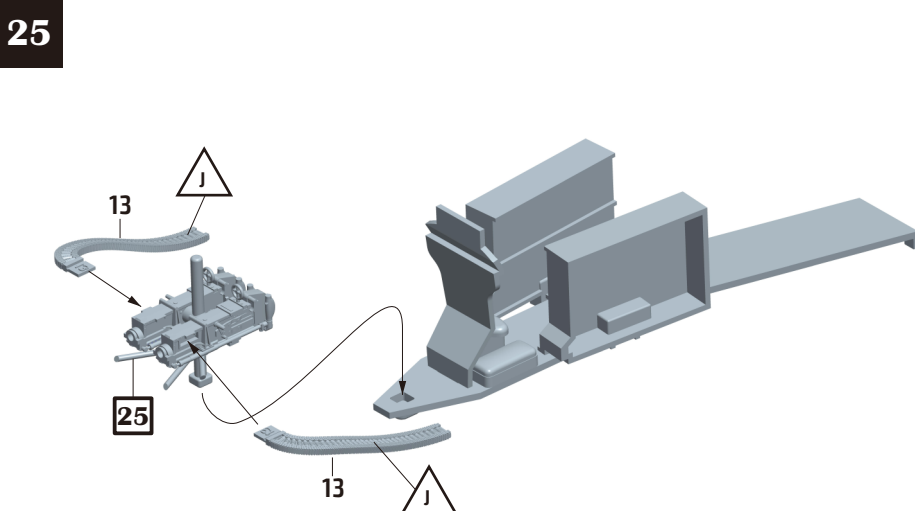
23



24

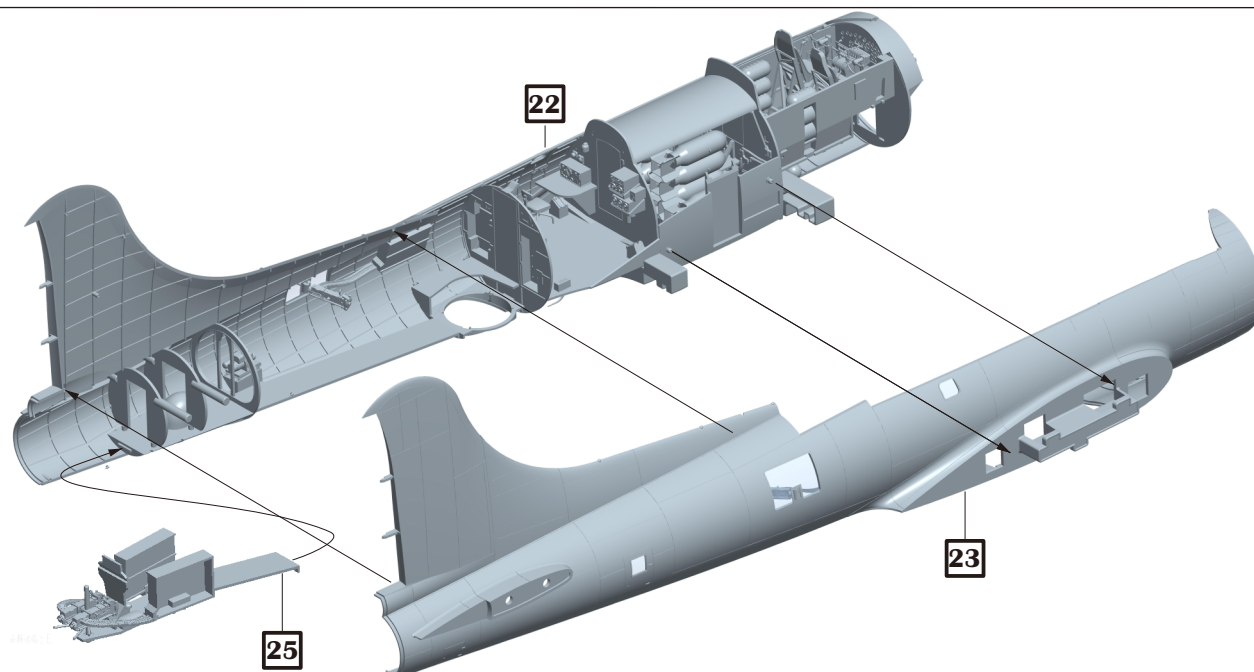


25

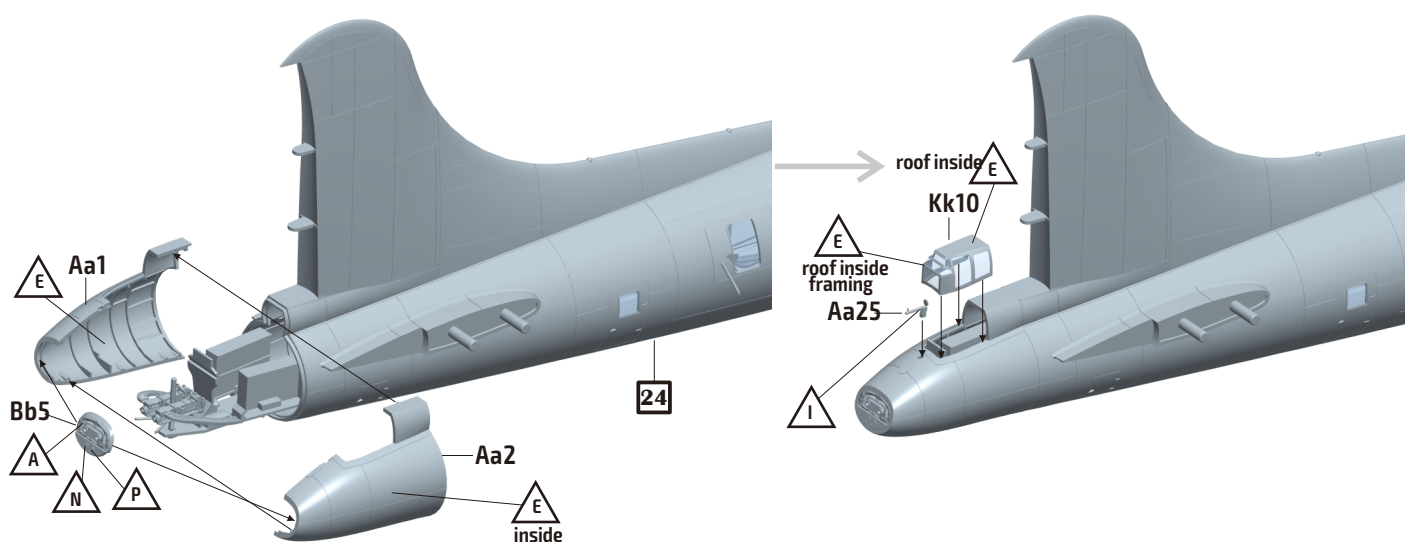




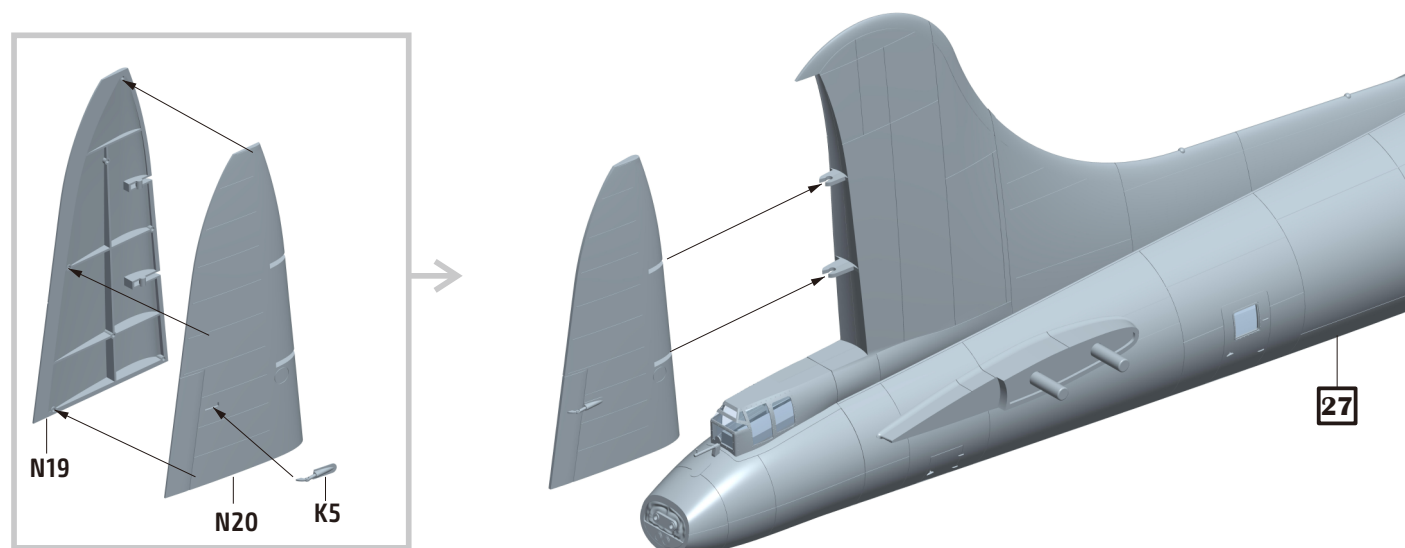
26



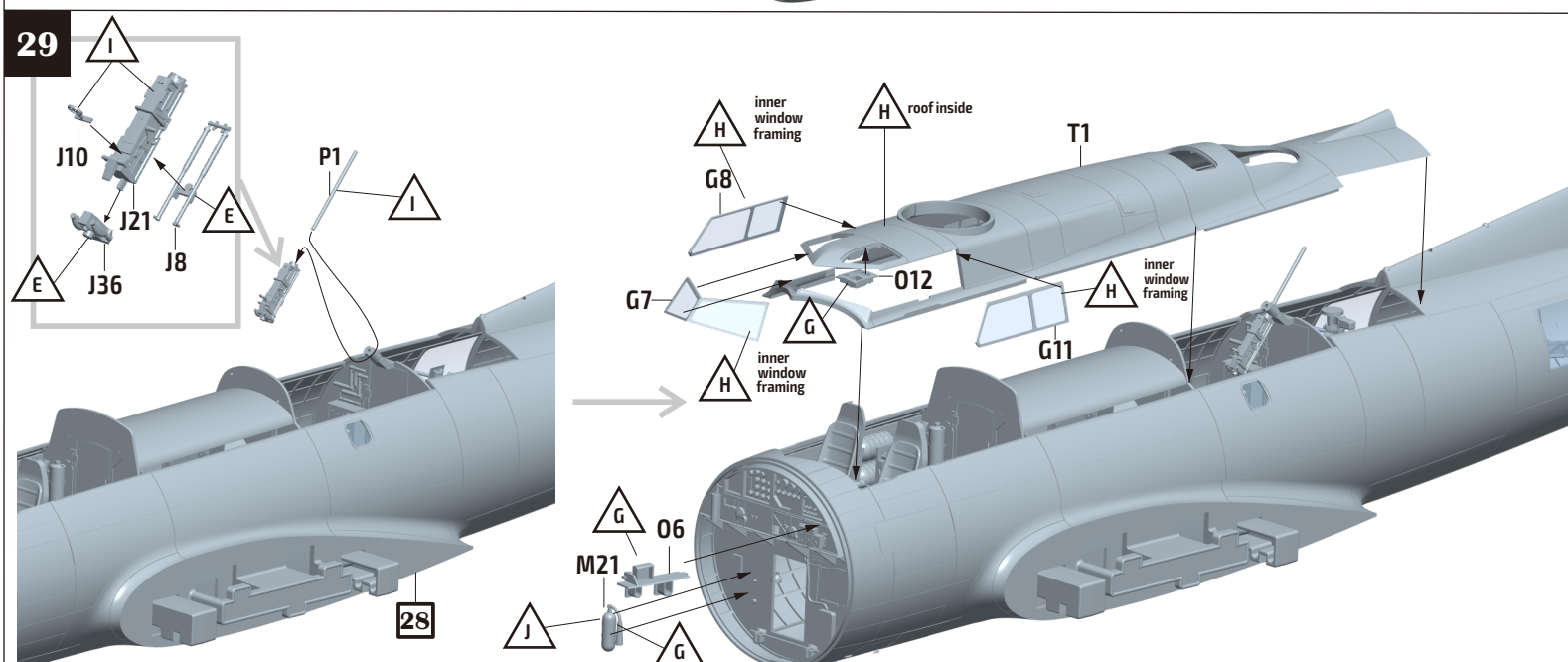
27



28

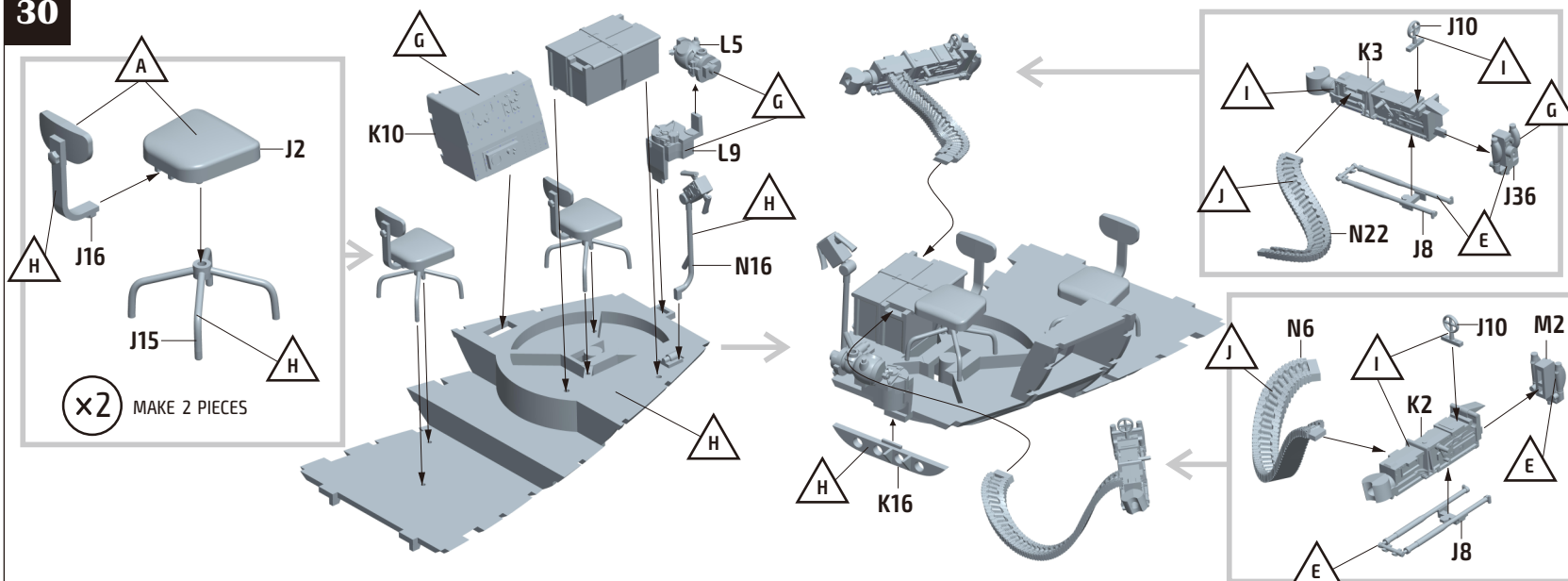


29

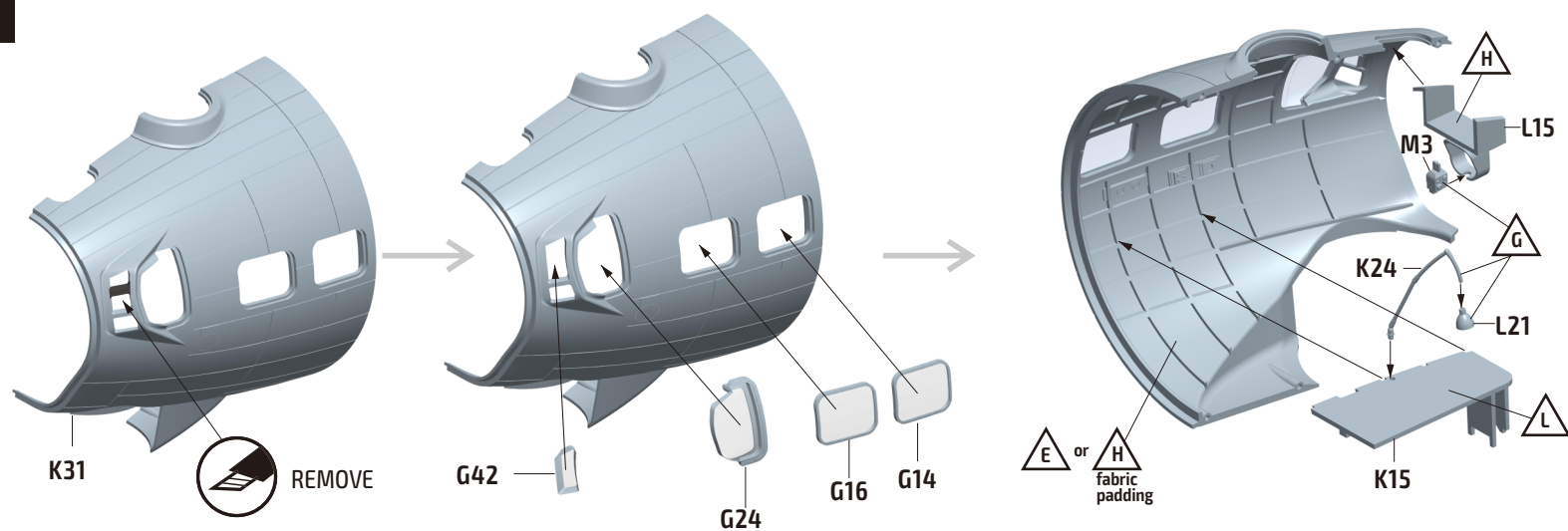




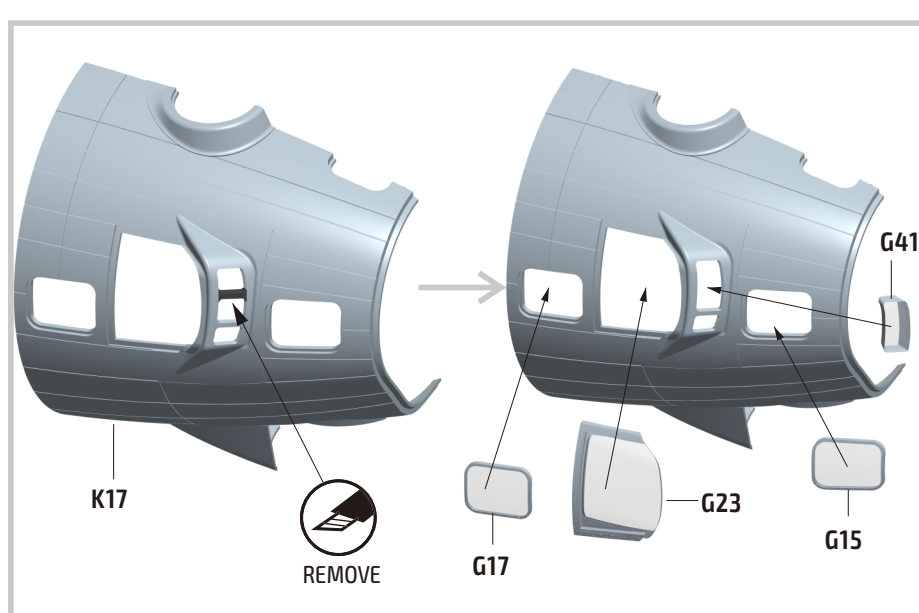
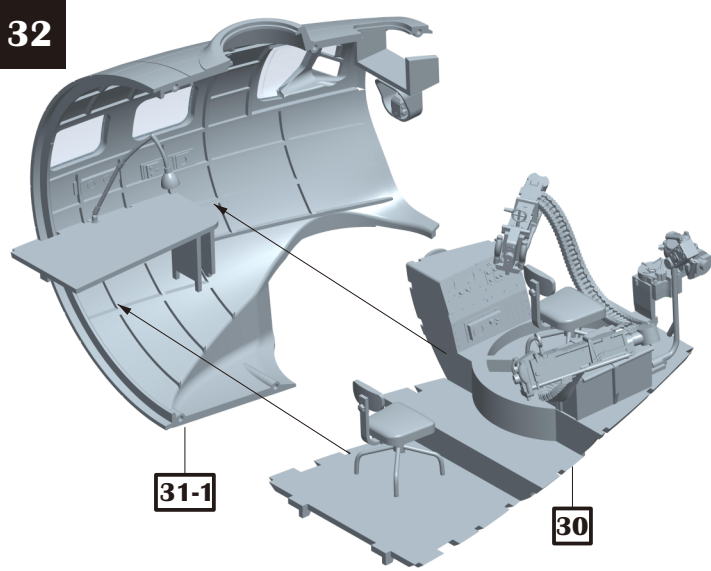
30



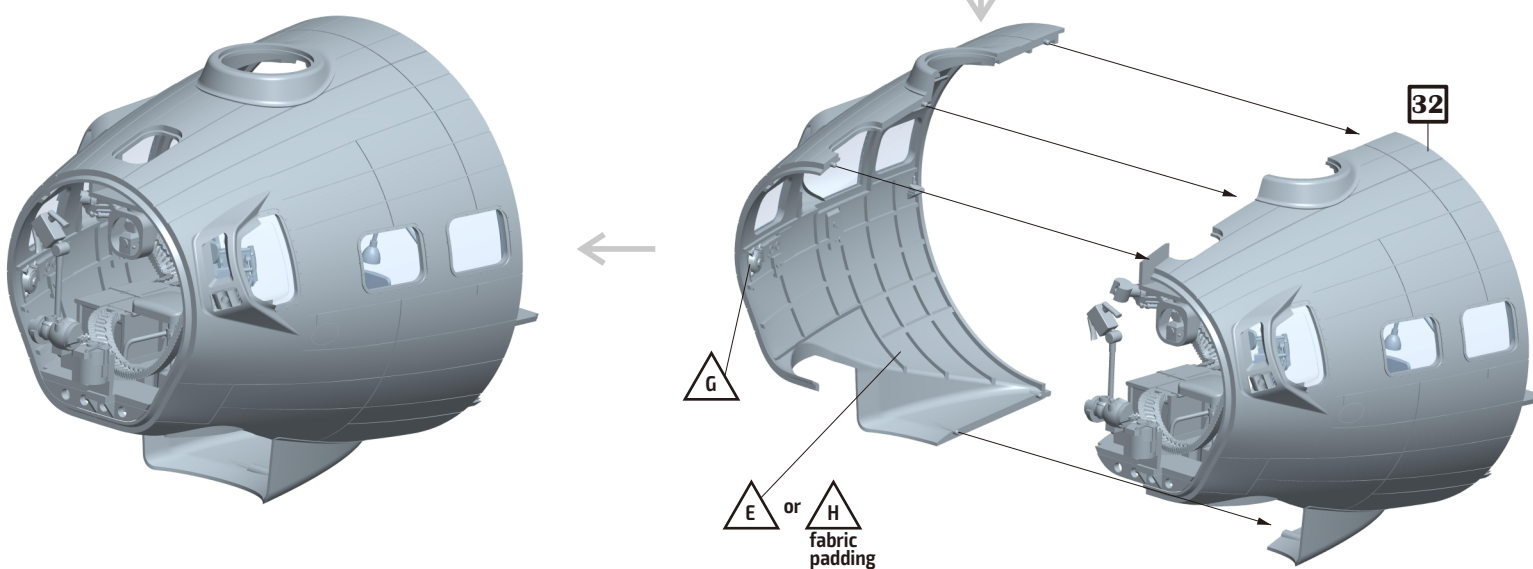
31

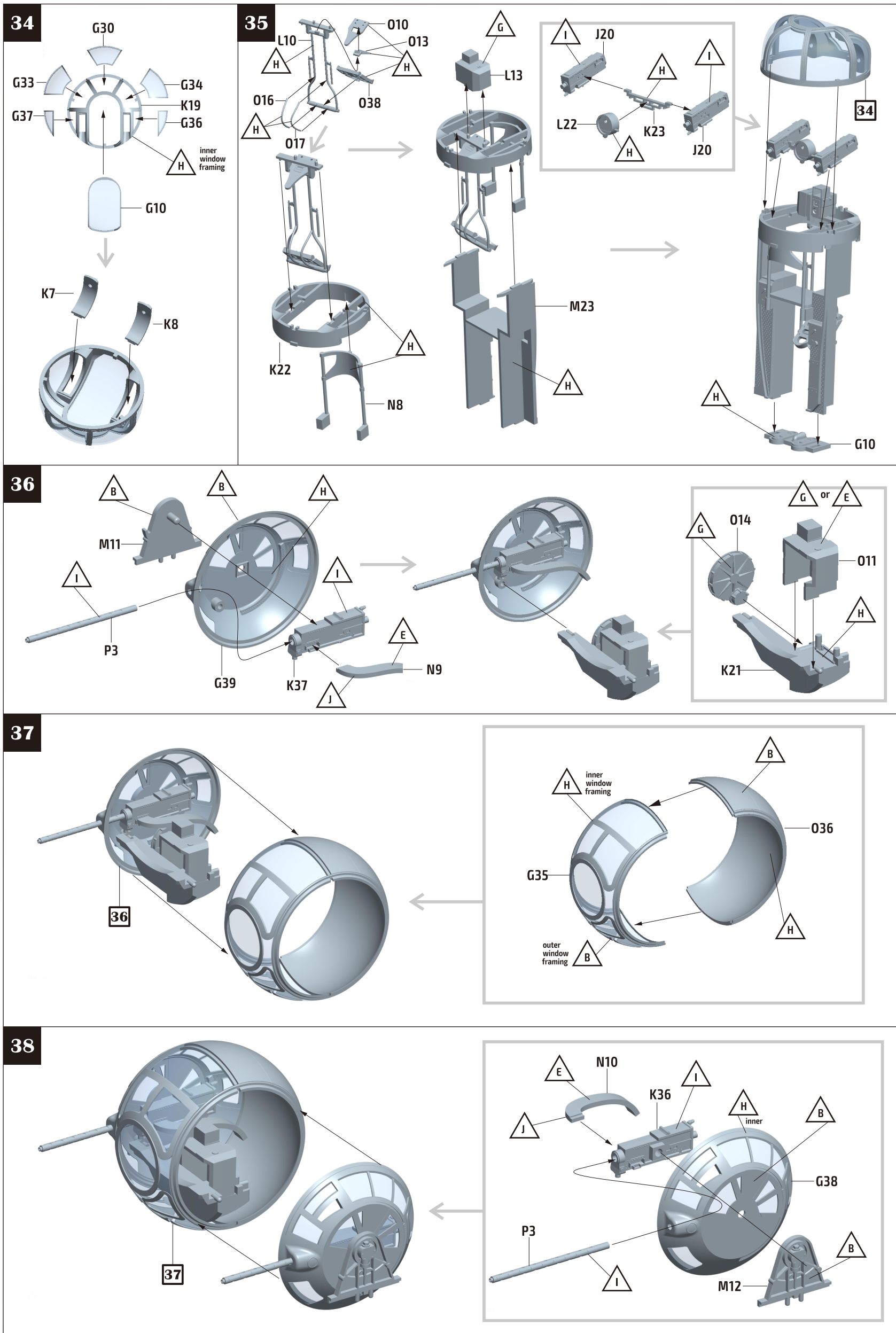


32



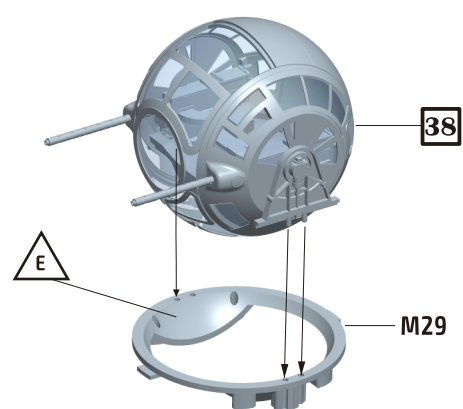
33



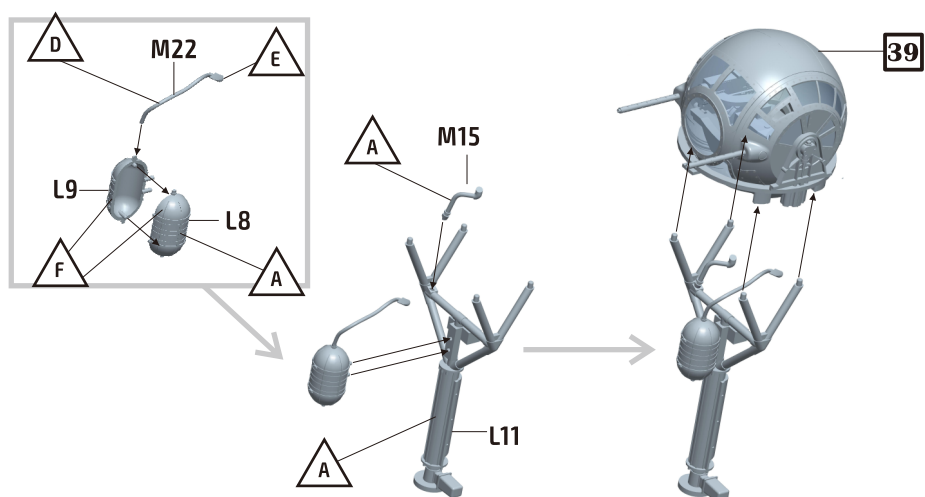




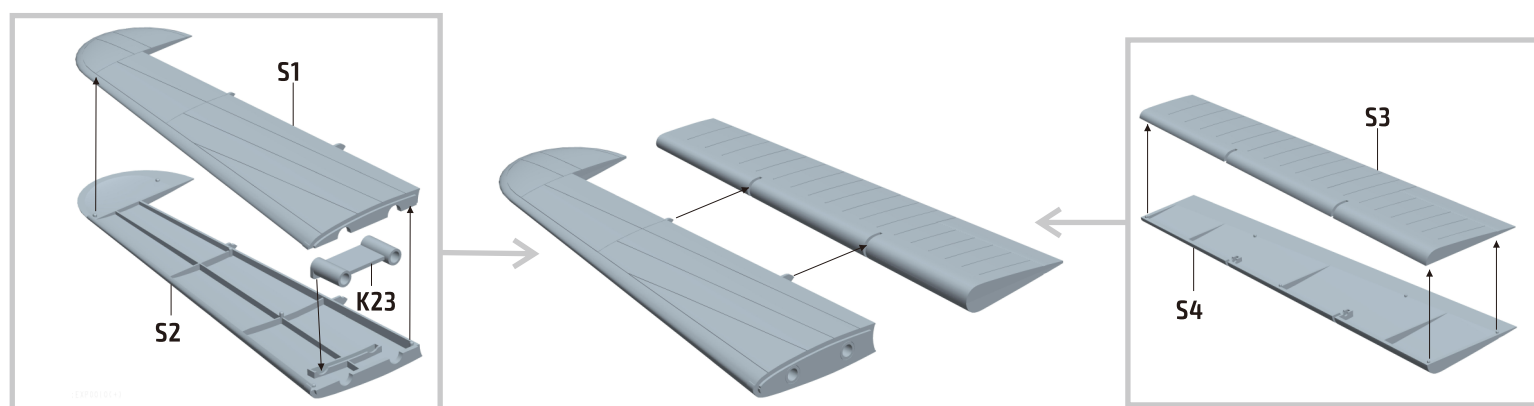
39



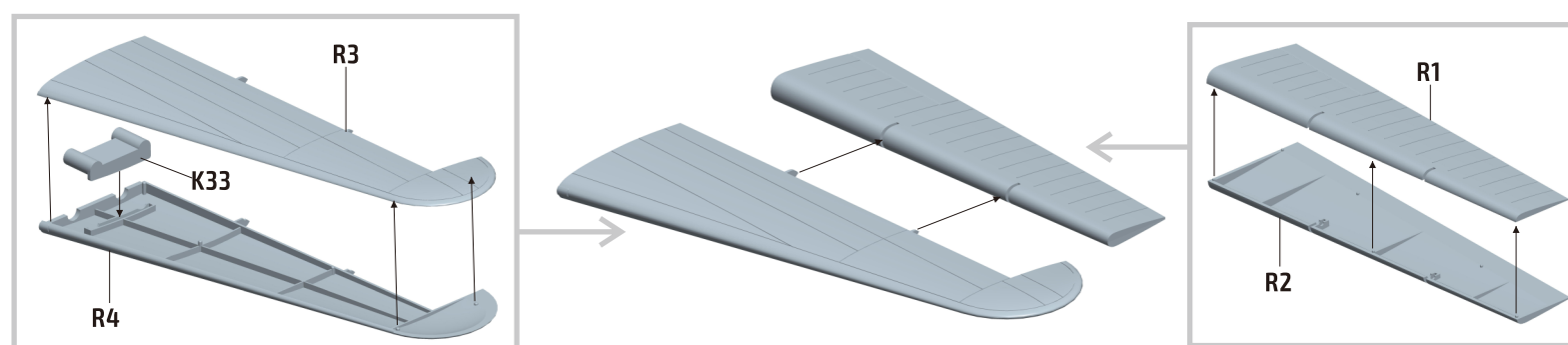
40



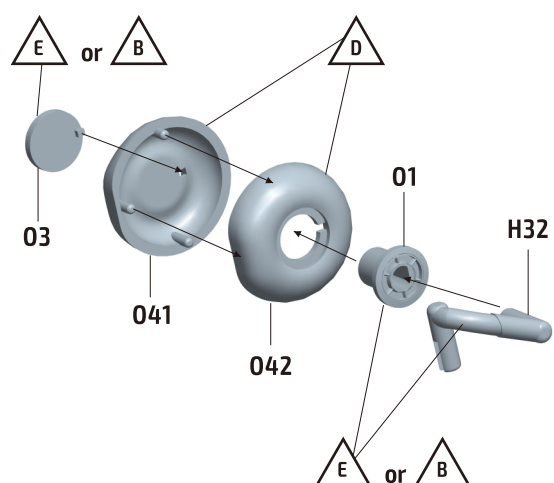
41



42

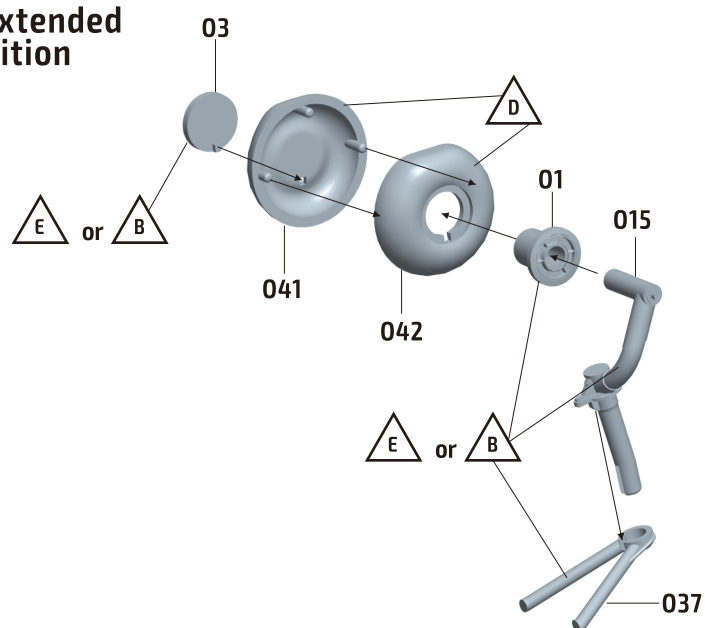


**43** Tailwheel  
in retracted  
position



44

Tailwheel  
in extended  
position

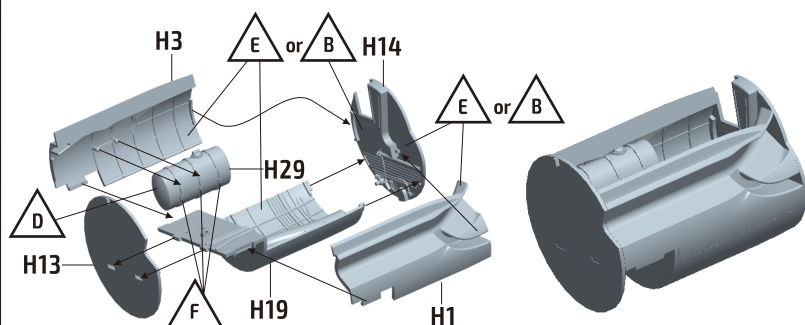






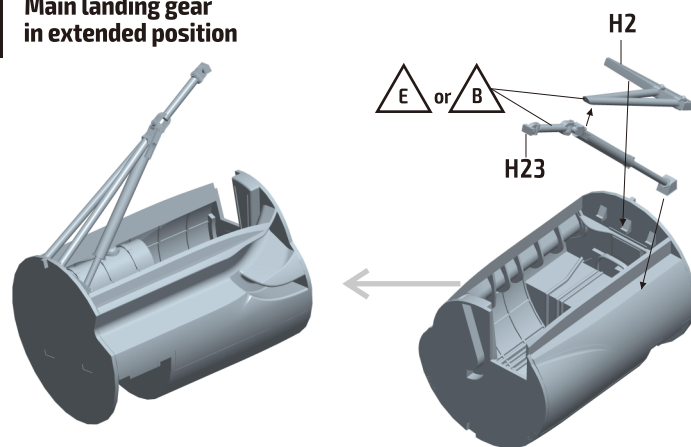
48

Main landing gear  
in retracted position

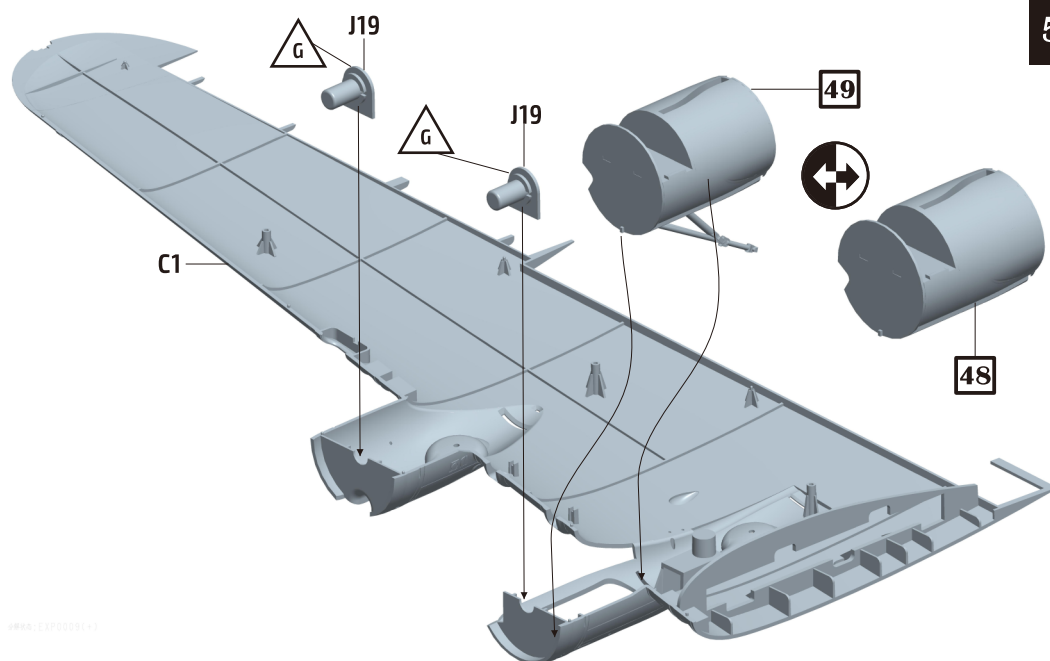


49

Main landing gear  
in extended position

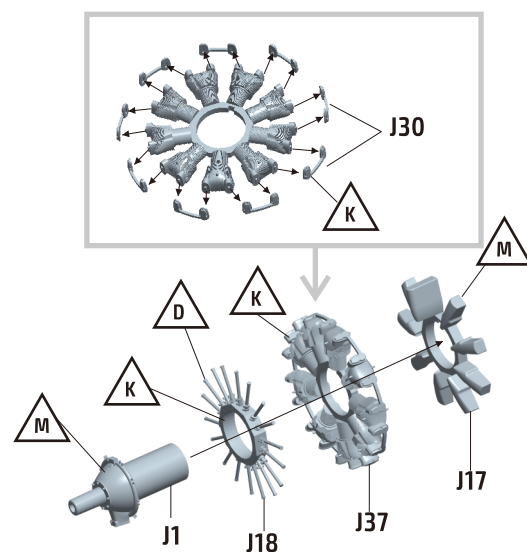


50



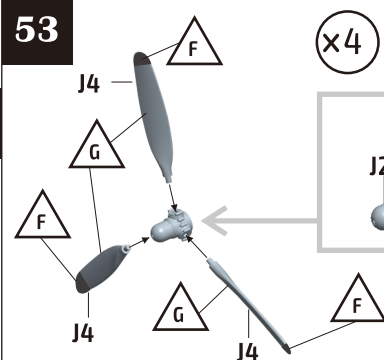
52

×4 MAKE 4 PIECES

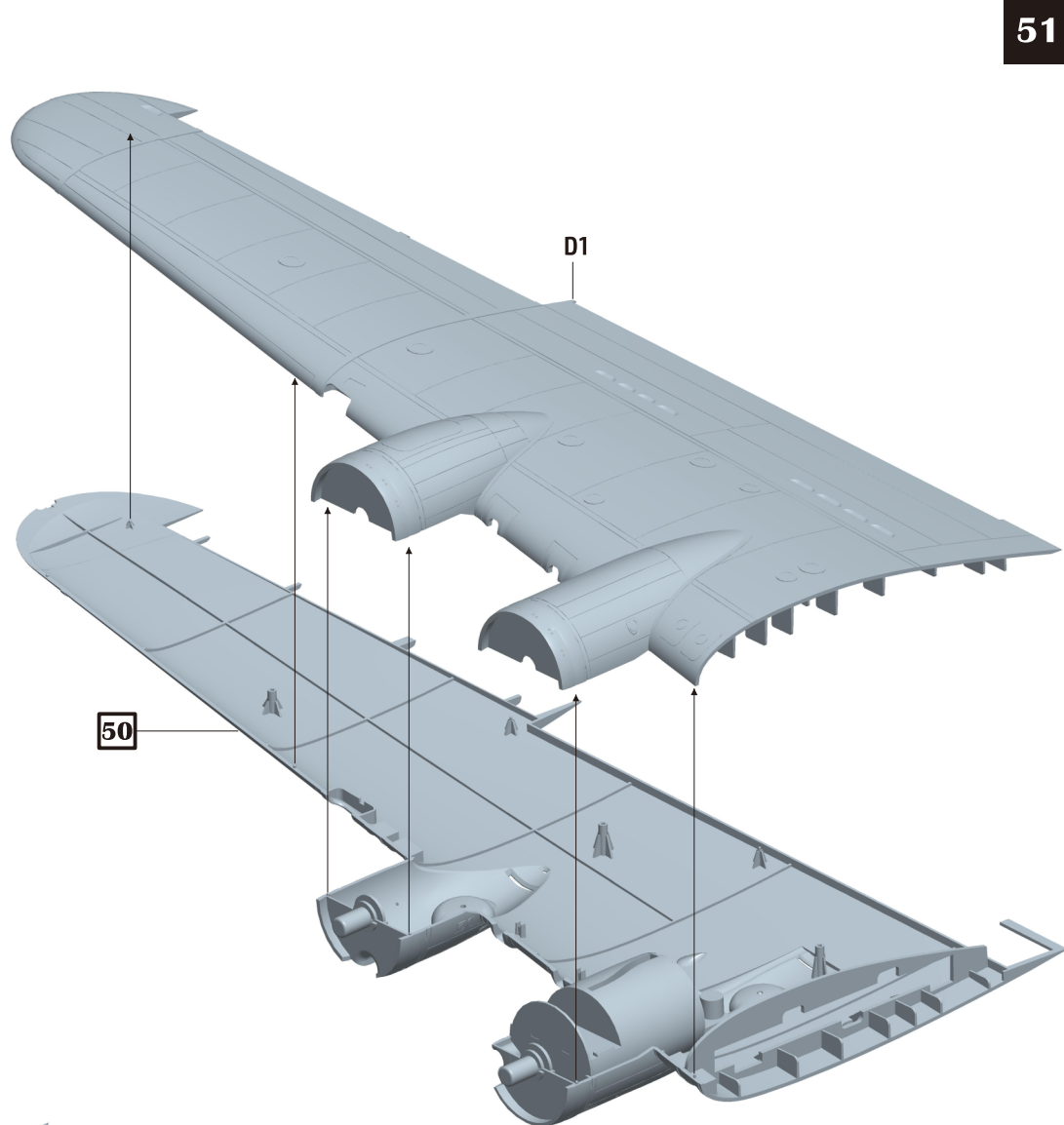


53

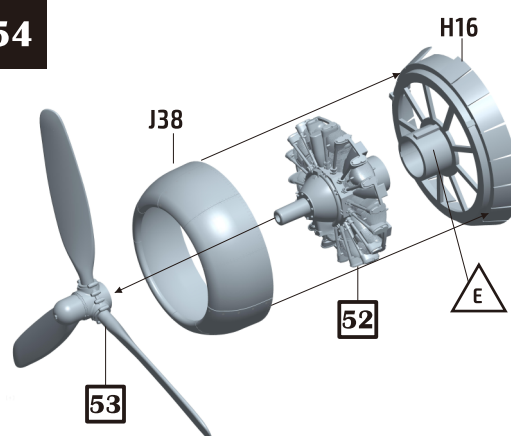
×4 MAKE 4 PIECES



51

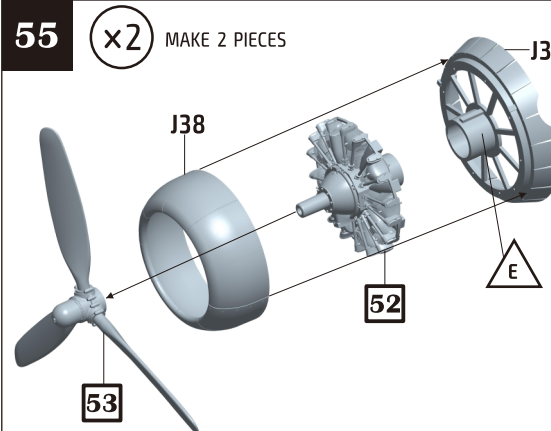


54



55

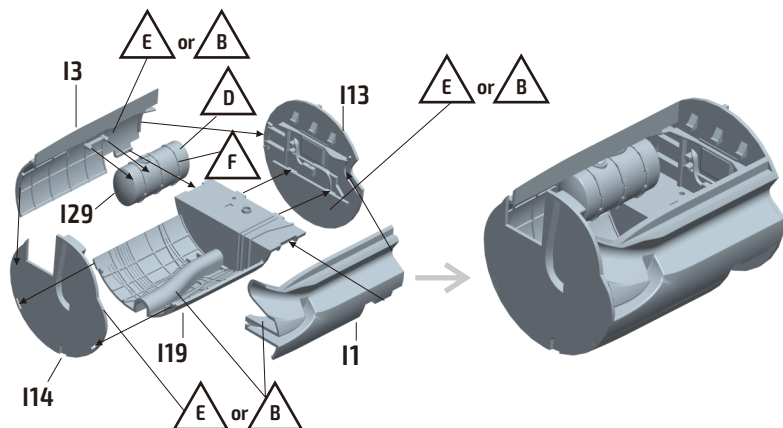
×2 MAKE 2 PIECES



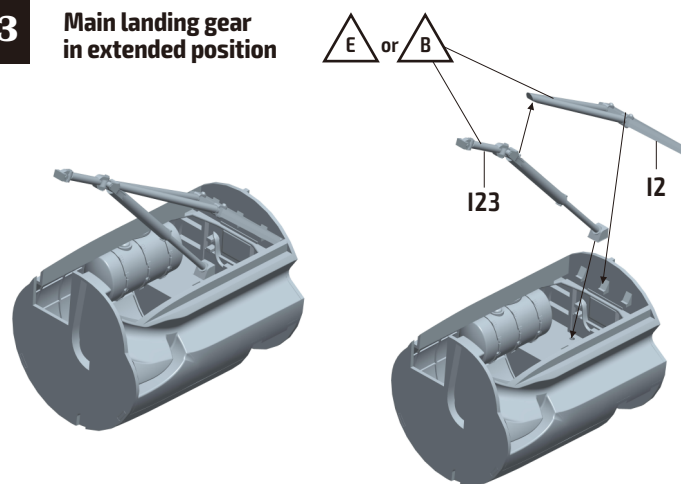




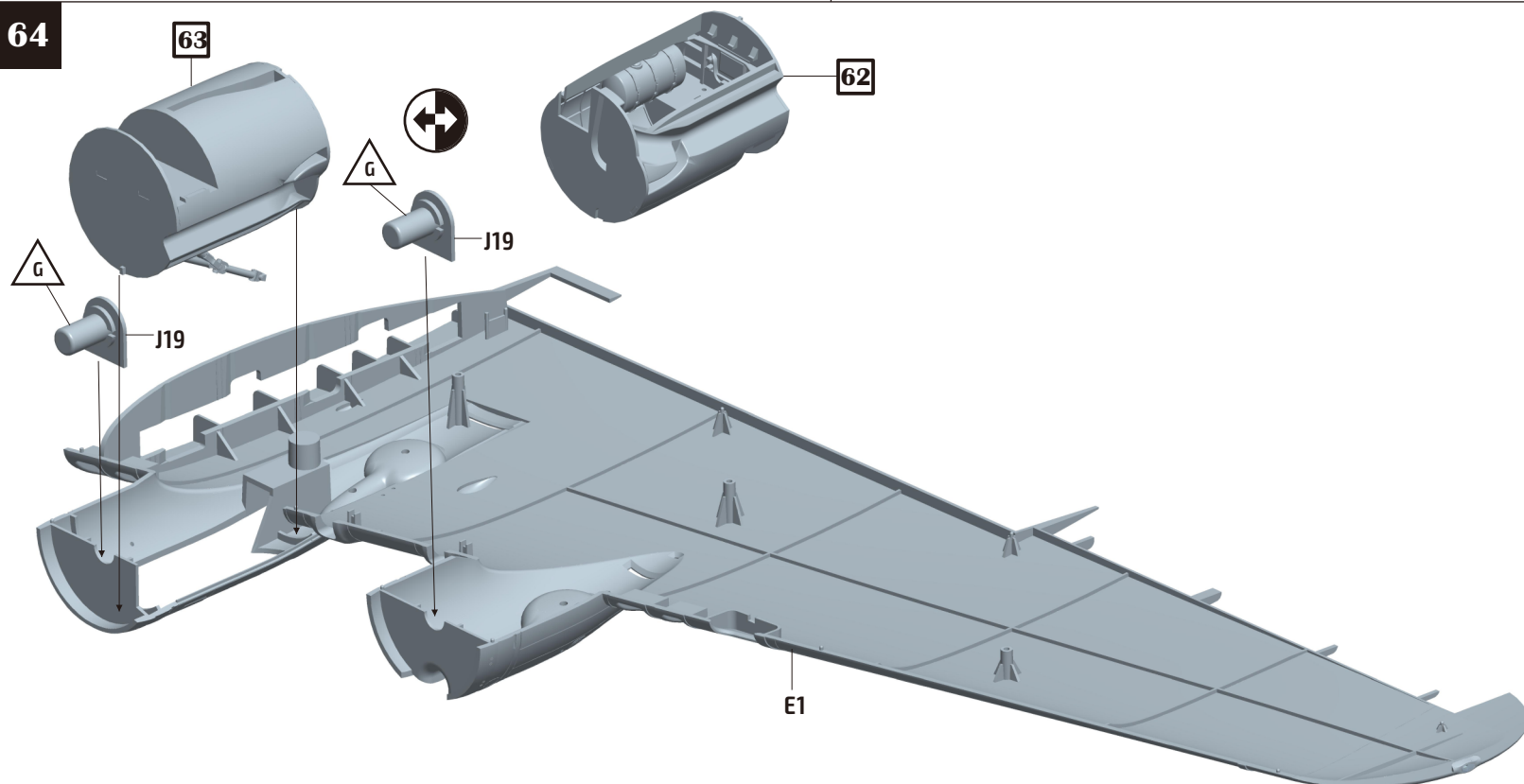
## 62 Main landing gear in retracted position



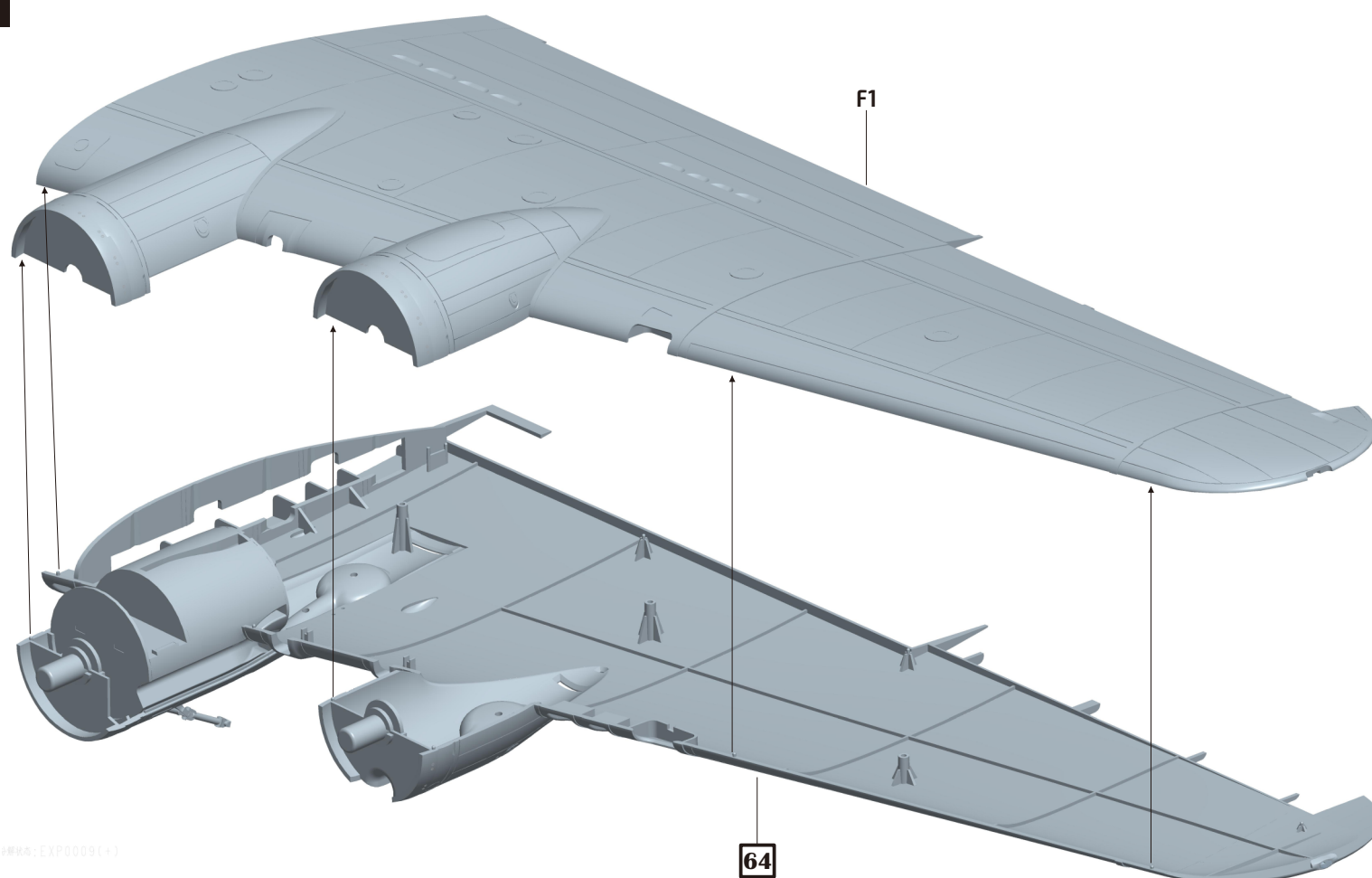
## 63 Main landing gear in extended position



## 64



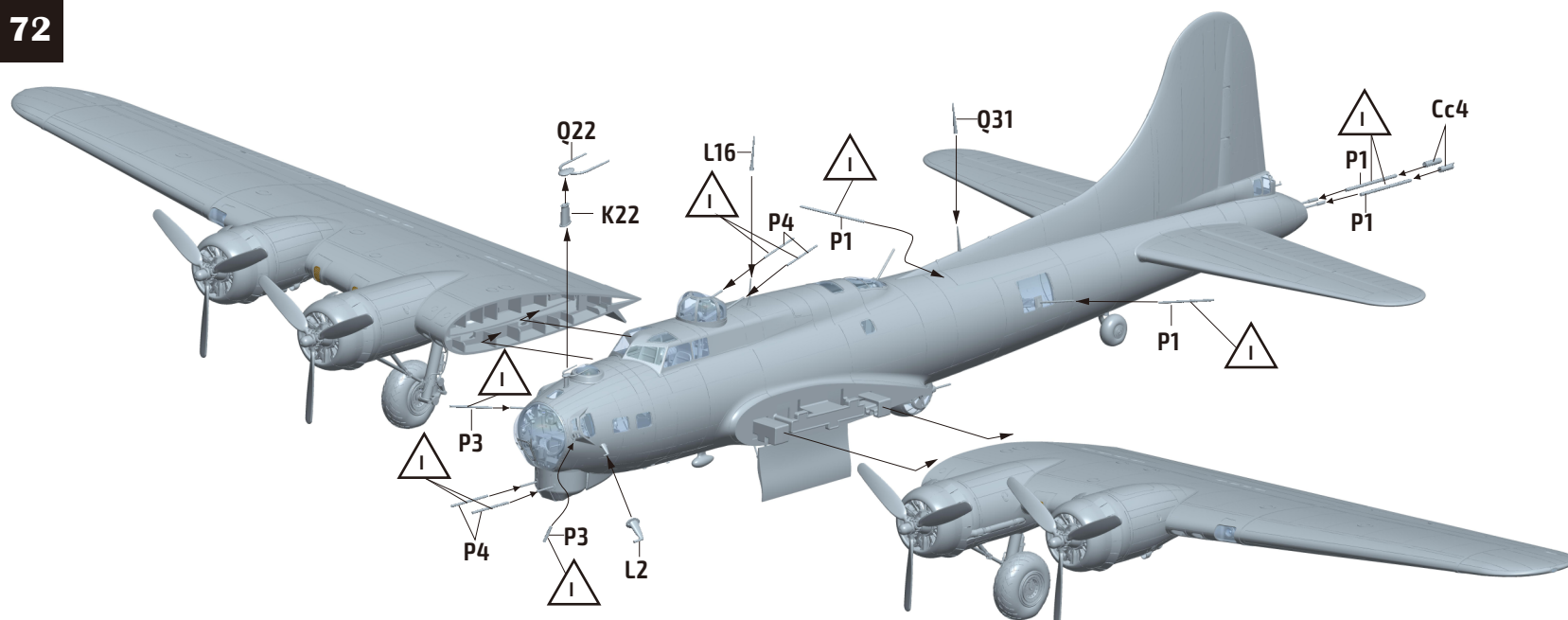
## 65







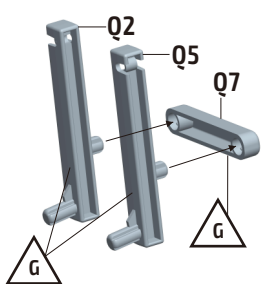
72



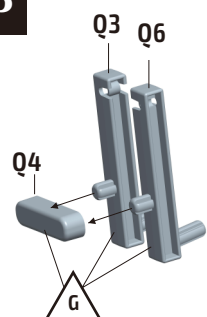
73



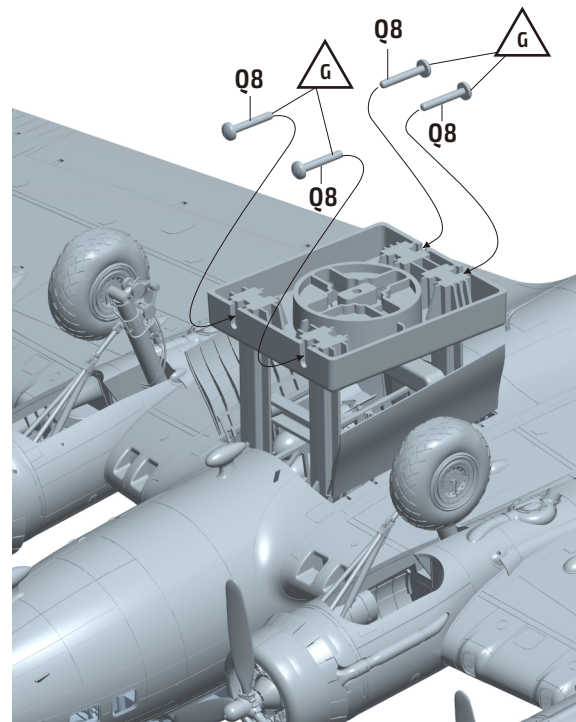
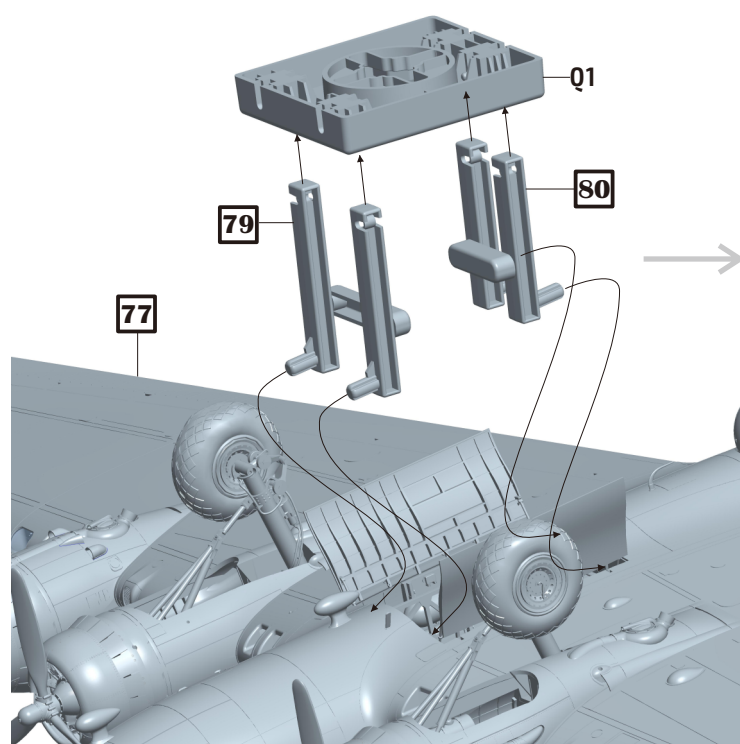
74

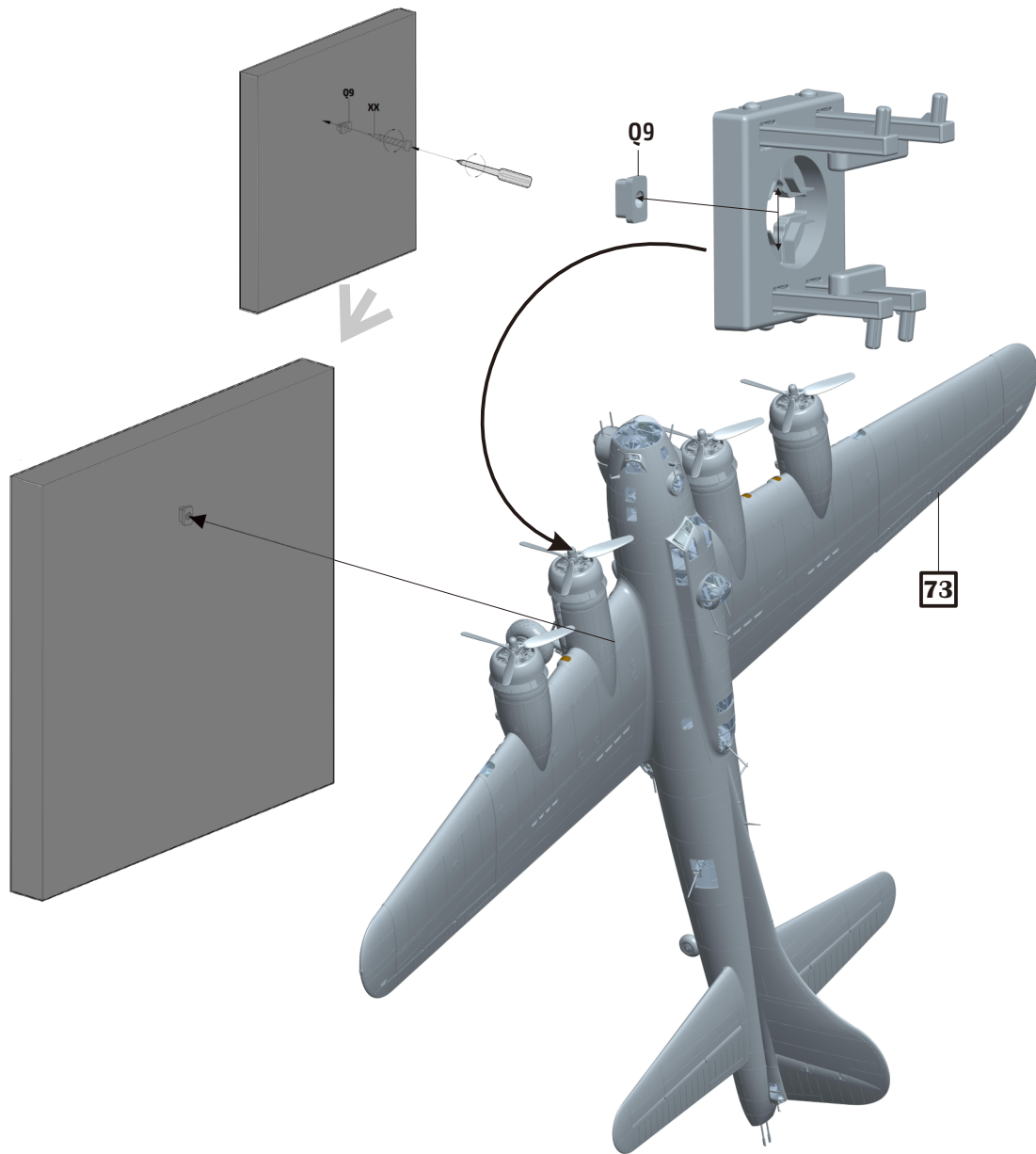


75

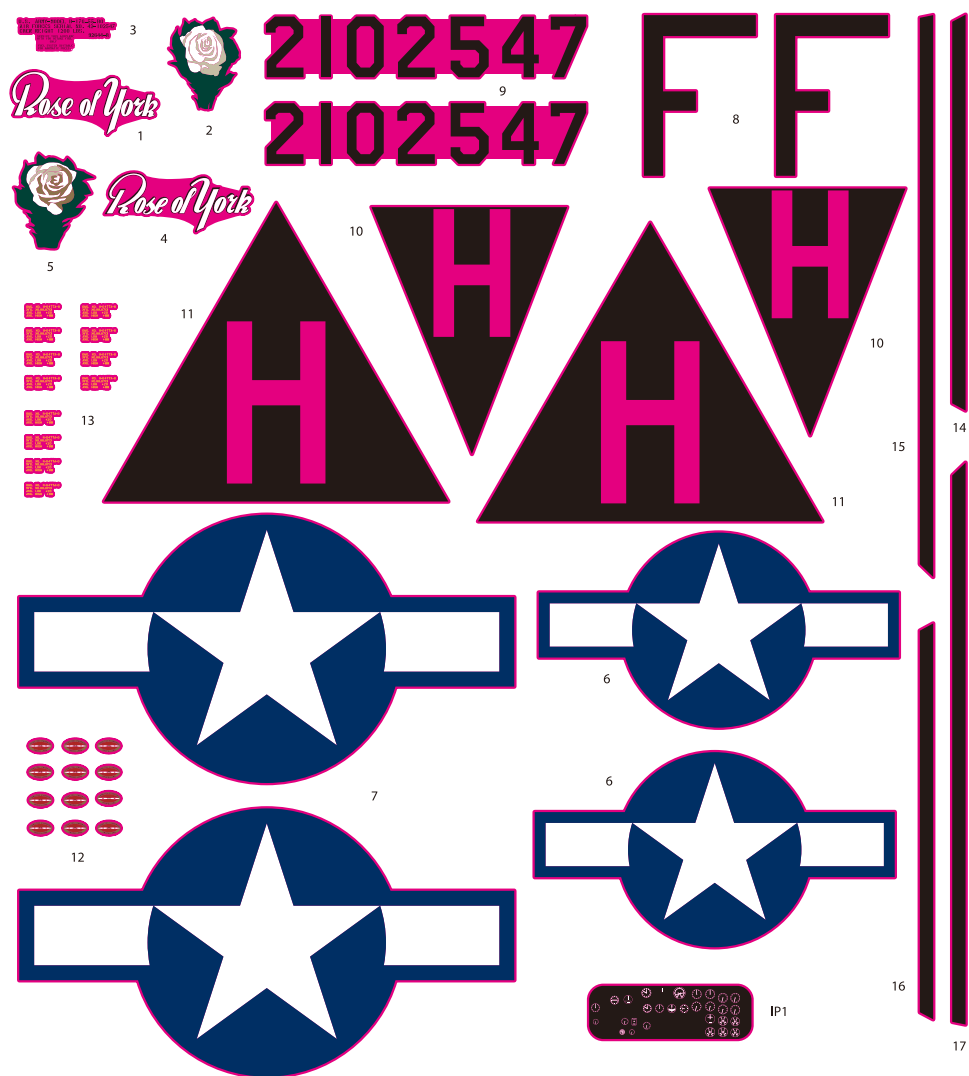


76





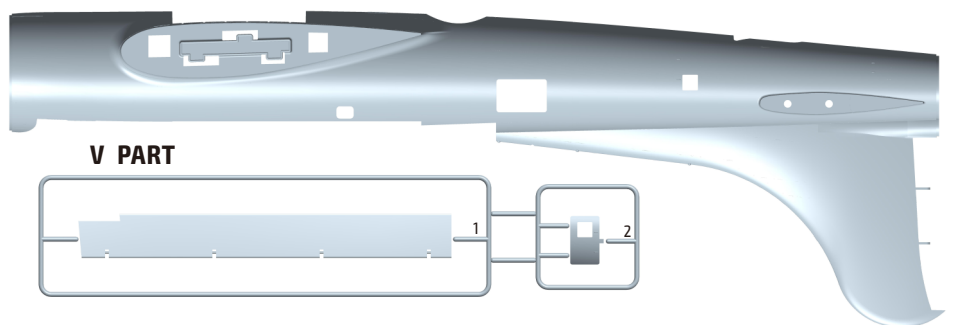
## Decals





# Parts

A PART



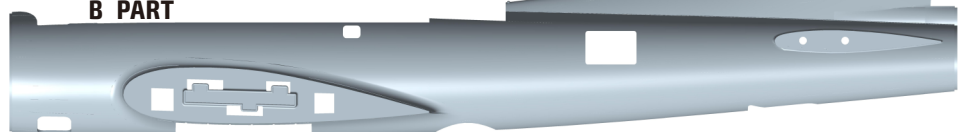
V PART



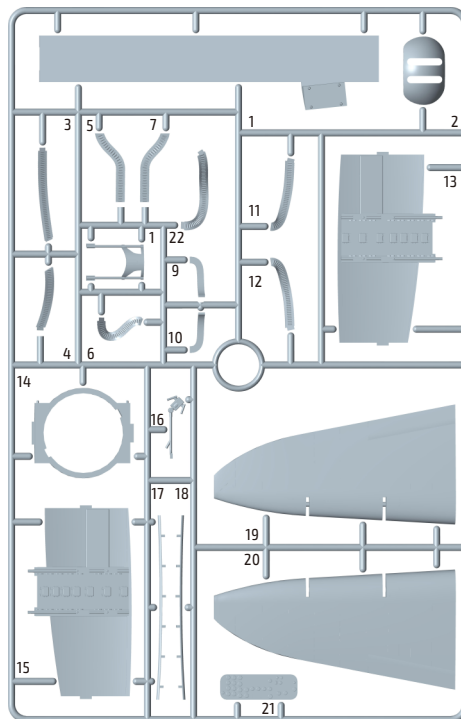
U PART



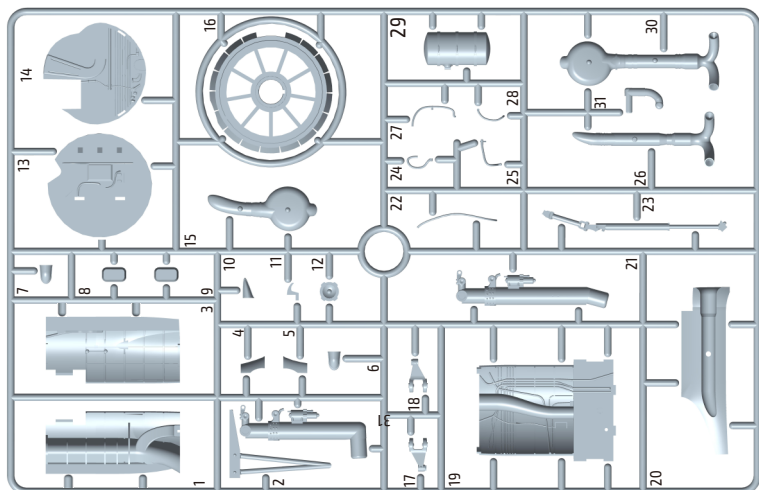
B PART



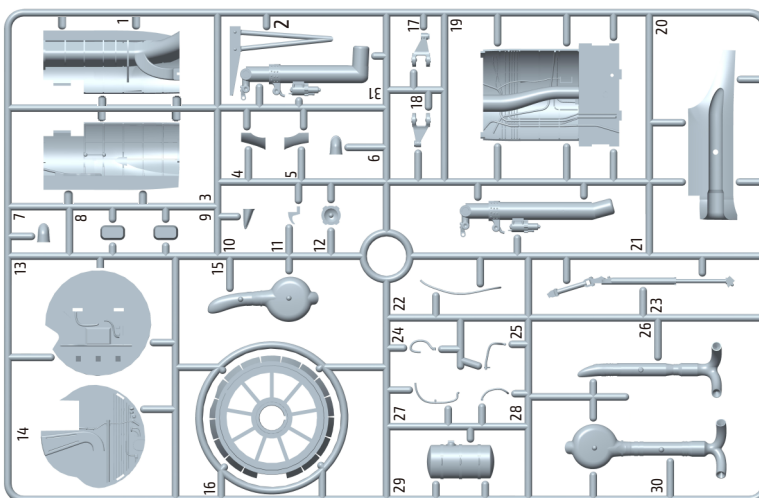
N PART



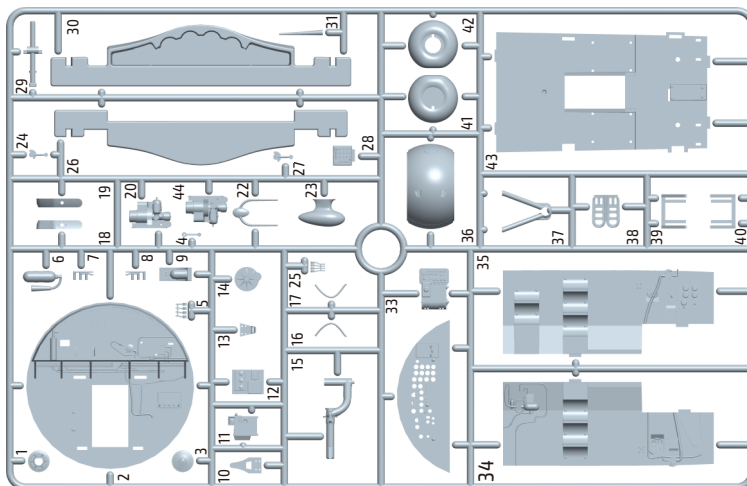
H PART



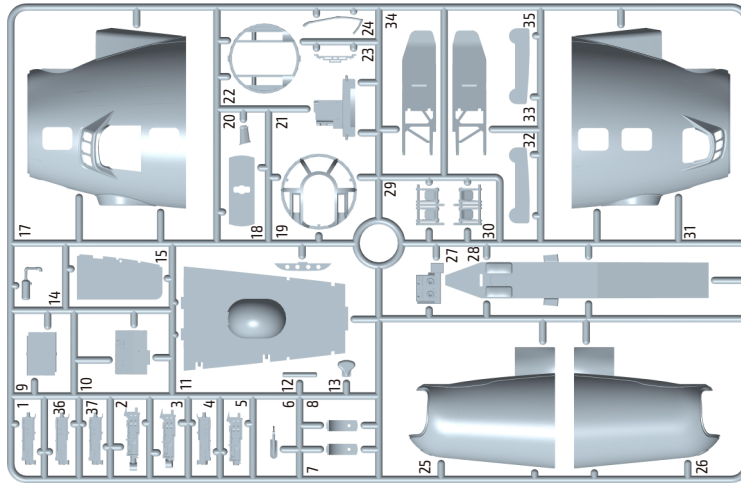
I PART



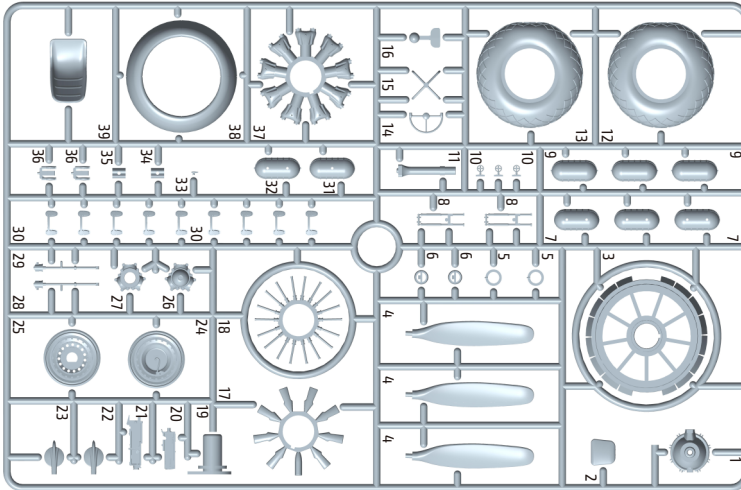
O PART



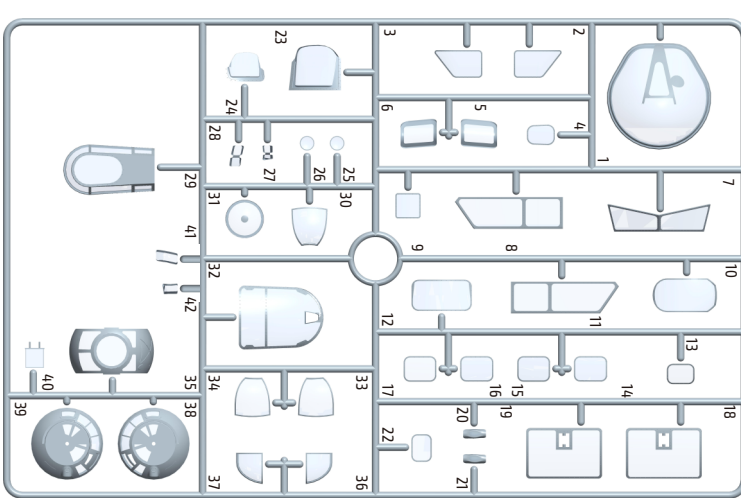
K PART



J PART X4

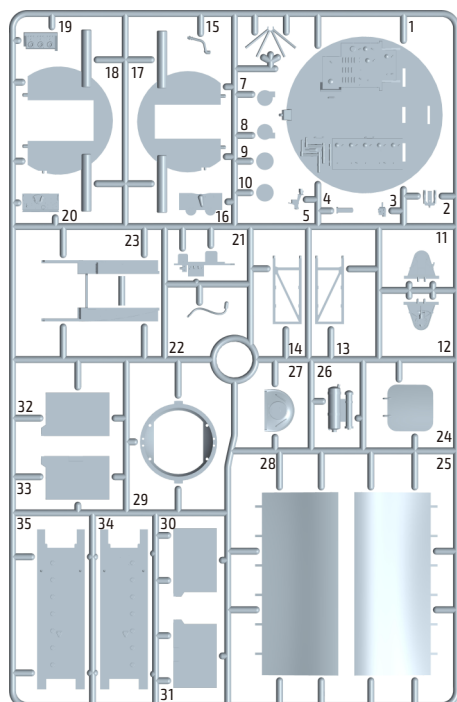


G PART

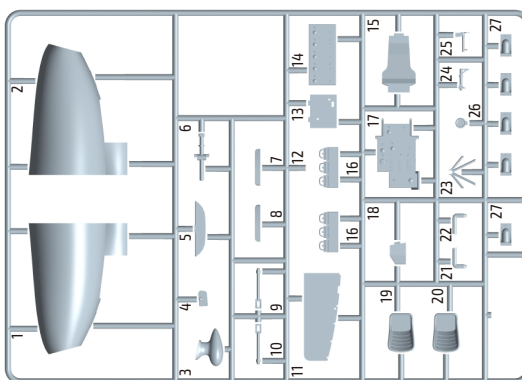


# Parts

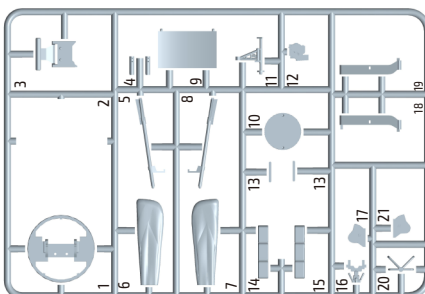
M PART



Aa PART

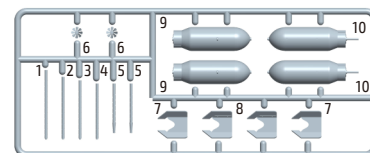


Cc PART



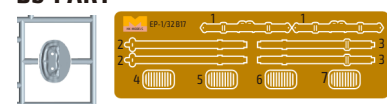
Resin Figure

P PART x5

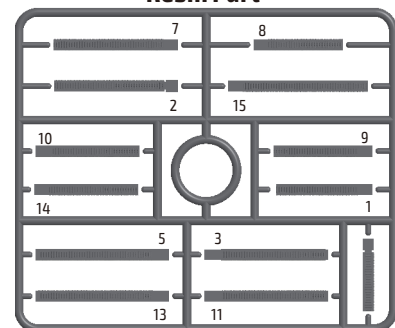


Bb PART

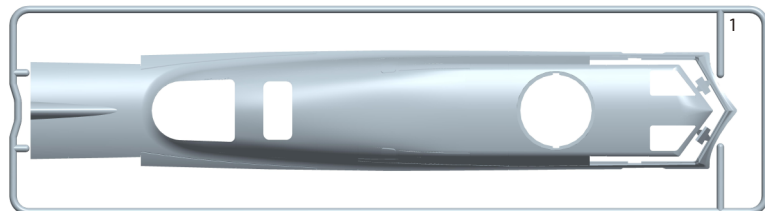
Photo-etched Part



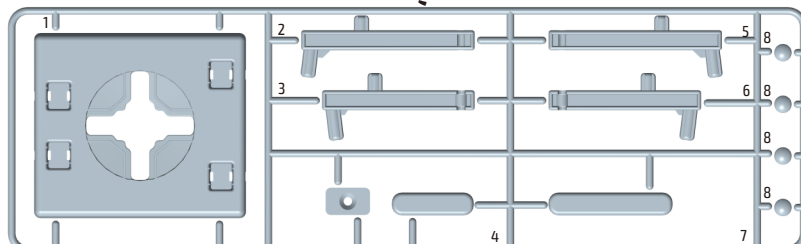
Resin Part



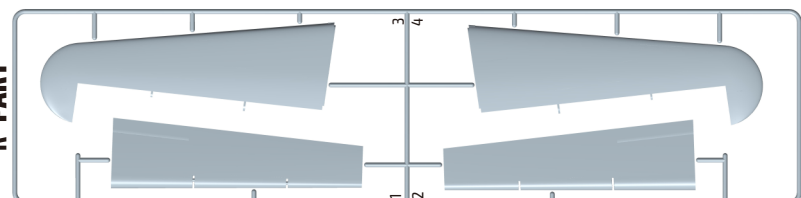
T PART



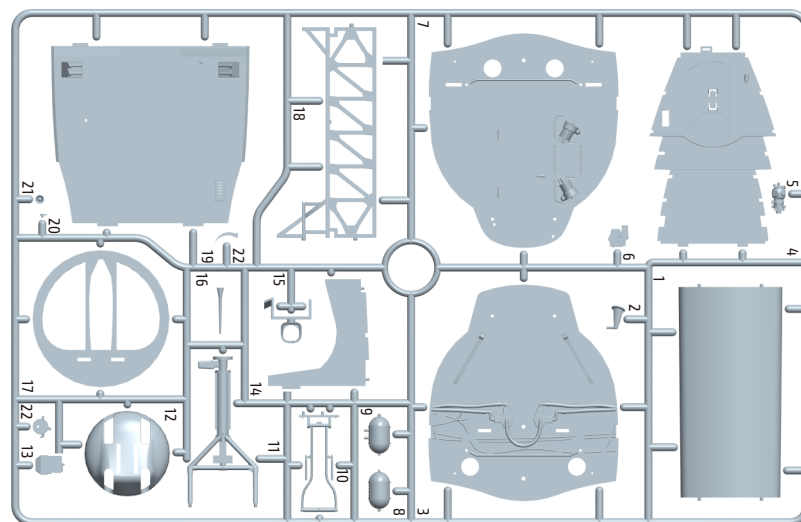
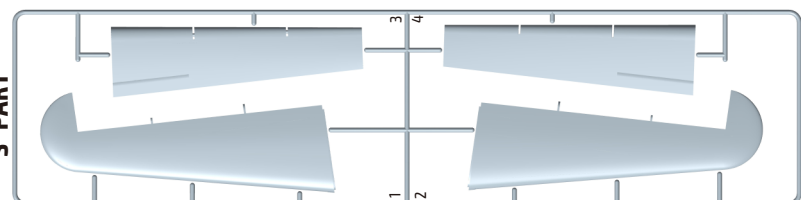
Q PART



R PART

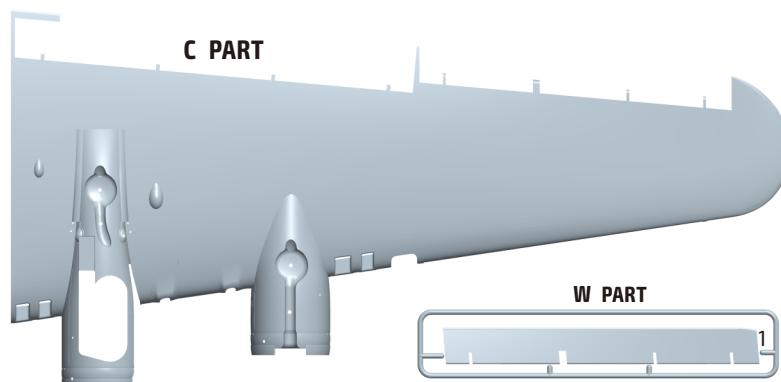


S PART



L PART

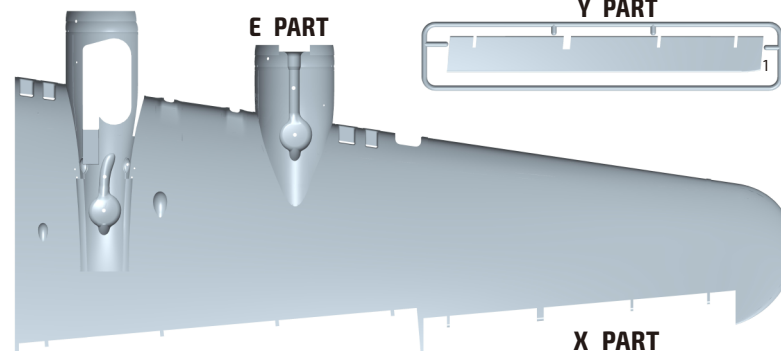
C PART



W PART



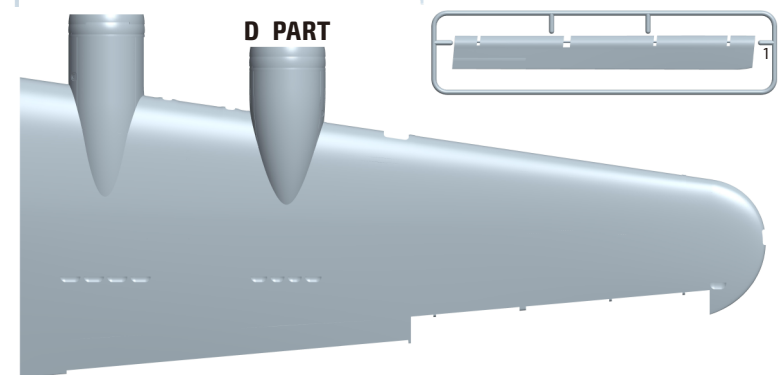
E PART



Y PART



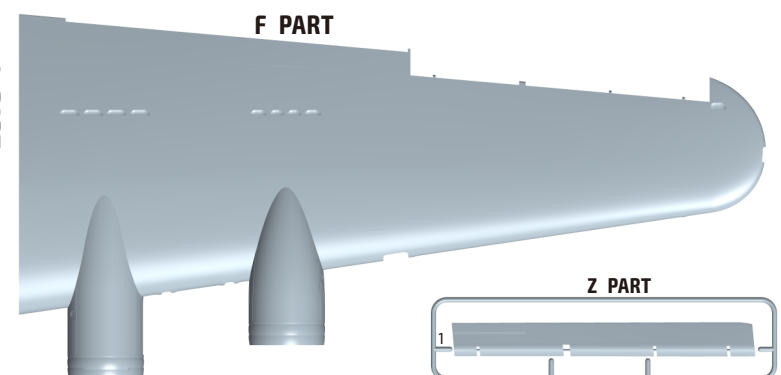
D PART



X PART



F PART

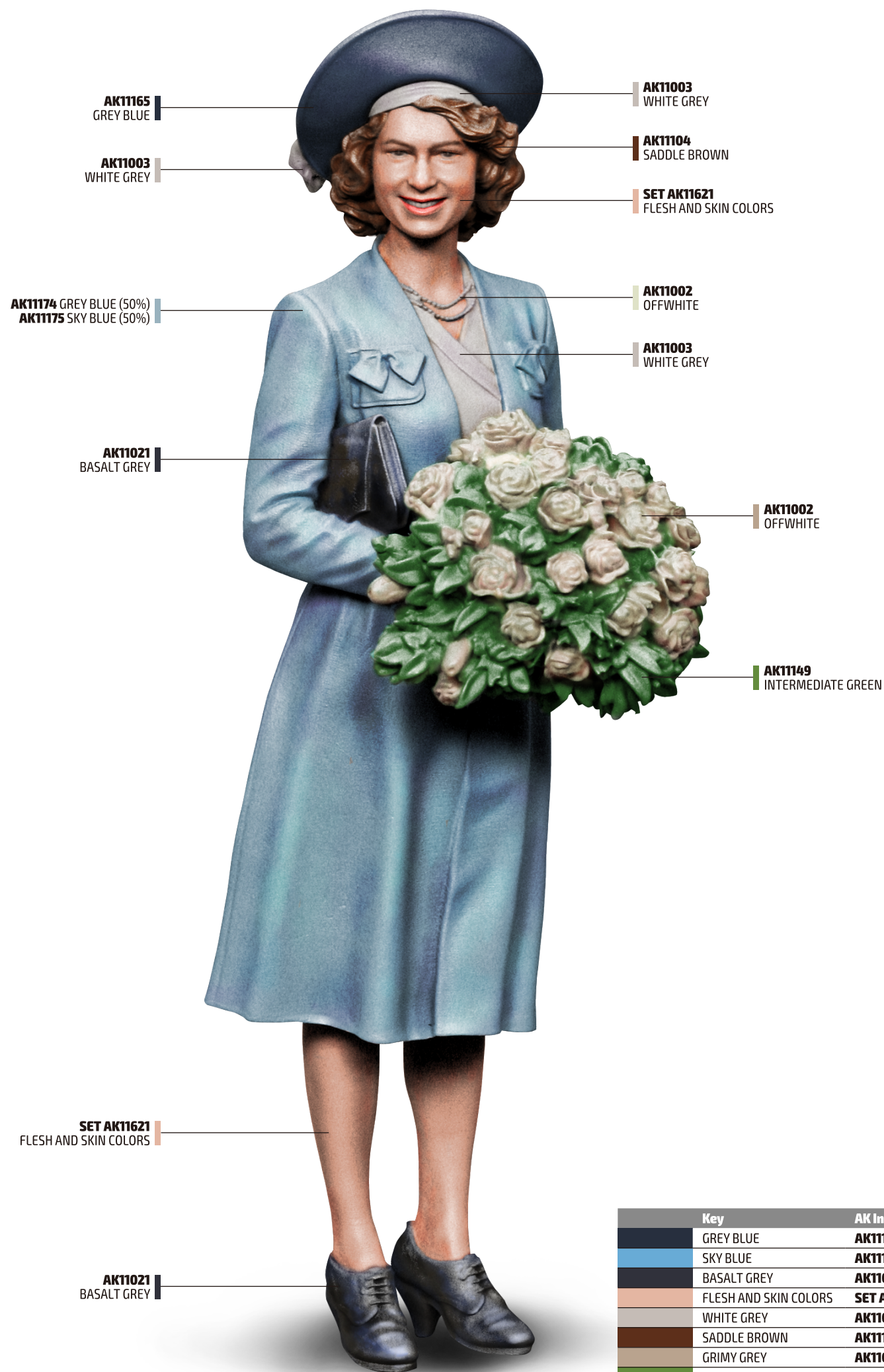


Z PART





Princess Elizabeth of York, July 1944 (Queen of the United Kingdom 1952-2022)

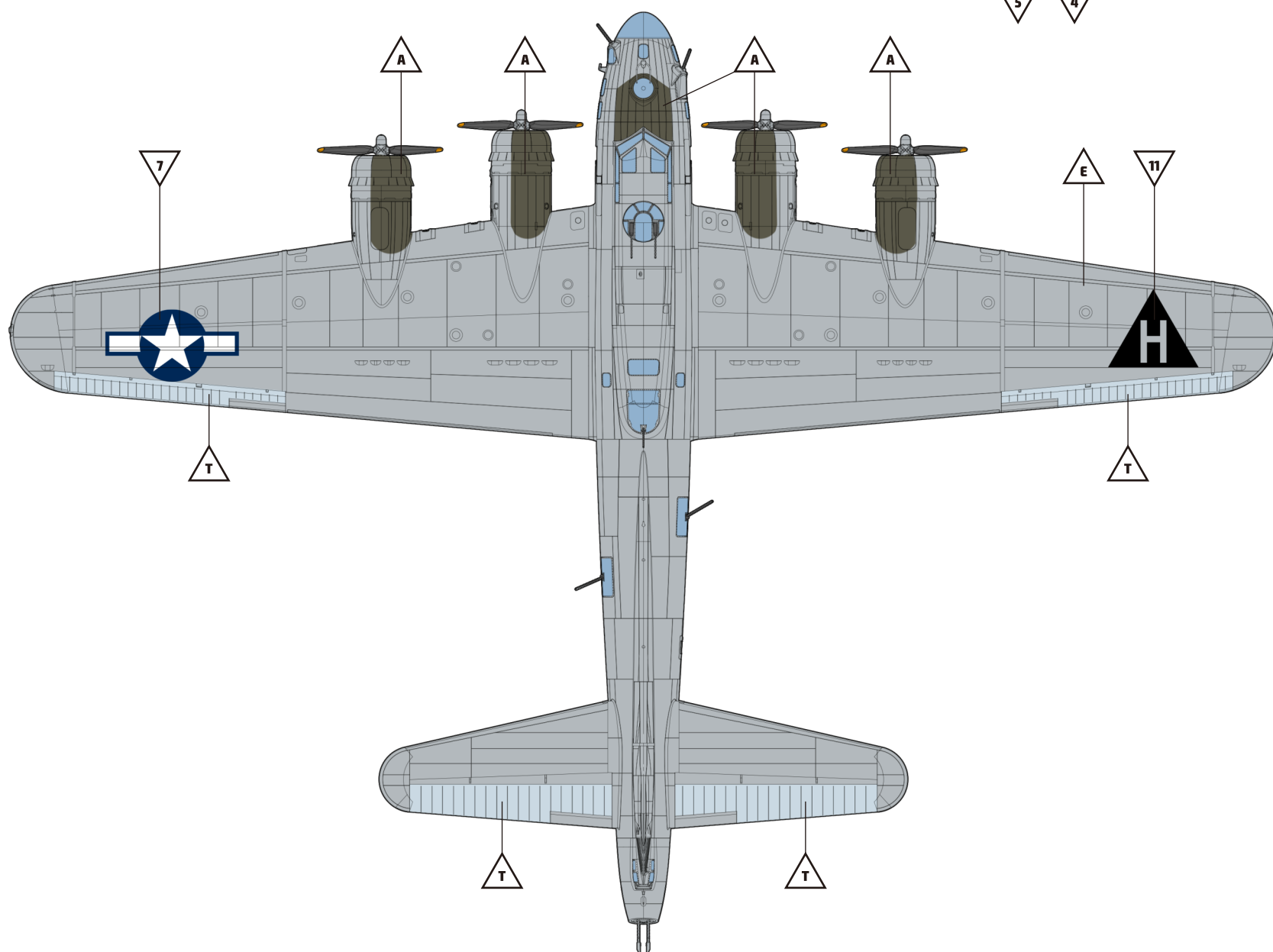
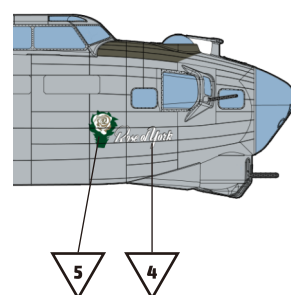
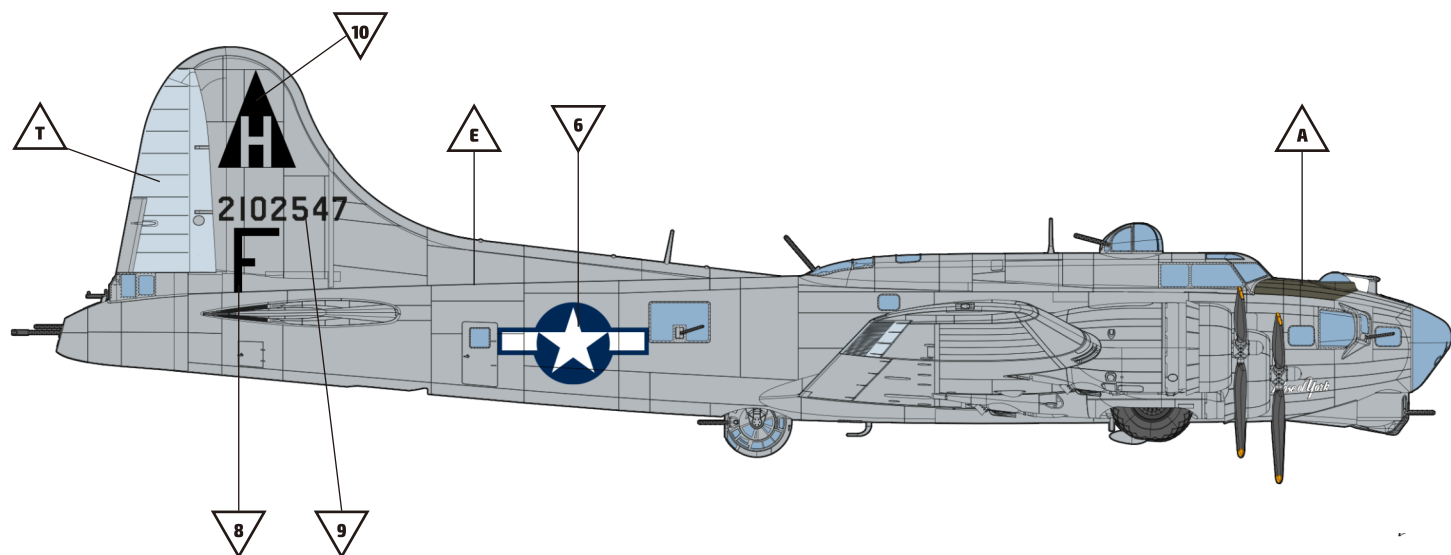


| Key                   | AK Interactive Acrylics |
|-----------------------|-------------------------|
| GREY BLUE             | <b>AK11165</b>          |
| SKY BLUE              | <b>AK11175</b>          |
| BASALT GREY           | <b>AK11021</b>          |
| FLESH AND SKIN COLORS | <b>SET AK11621</b>      |
| WHITE GREY            | <b>AK11003</b>          |
| SADDLE BROWN          | <b>AK11104</b>          |
| GRIMY GREY            | <b>AK11008</b>          |
| INTERMEDIATE GREEN    | <b>AK11149</b>          |
| OFFWHITE              | <b>AK11002</b>          |

# MARKING

A

B-17G-55-B0, s/n 42-102547, 367th BS / 306th BG, RAF Thurleigh, UK, 6 July 1944

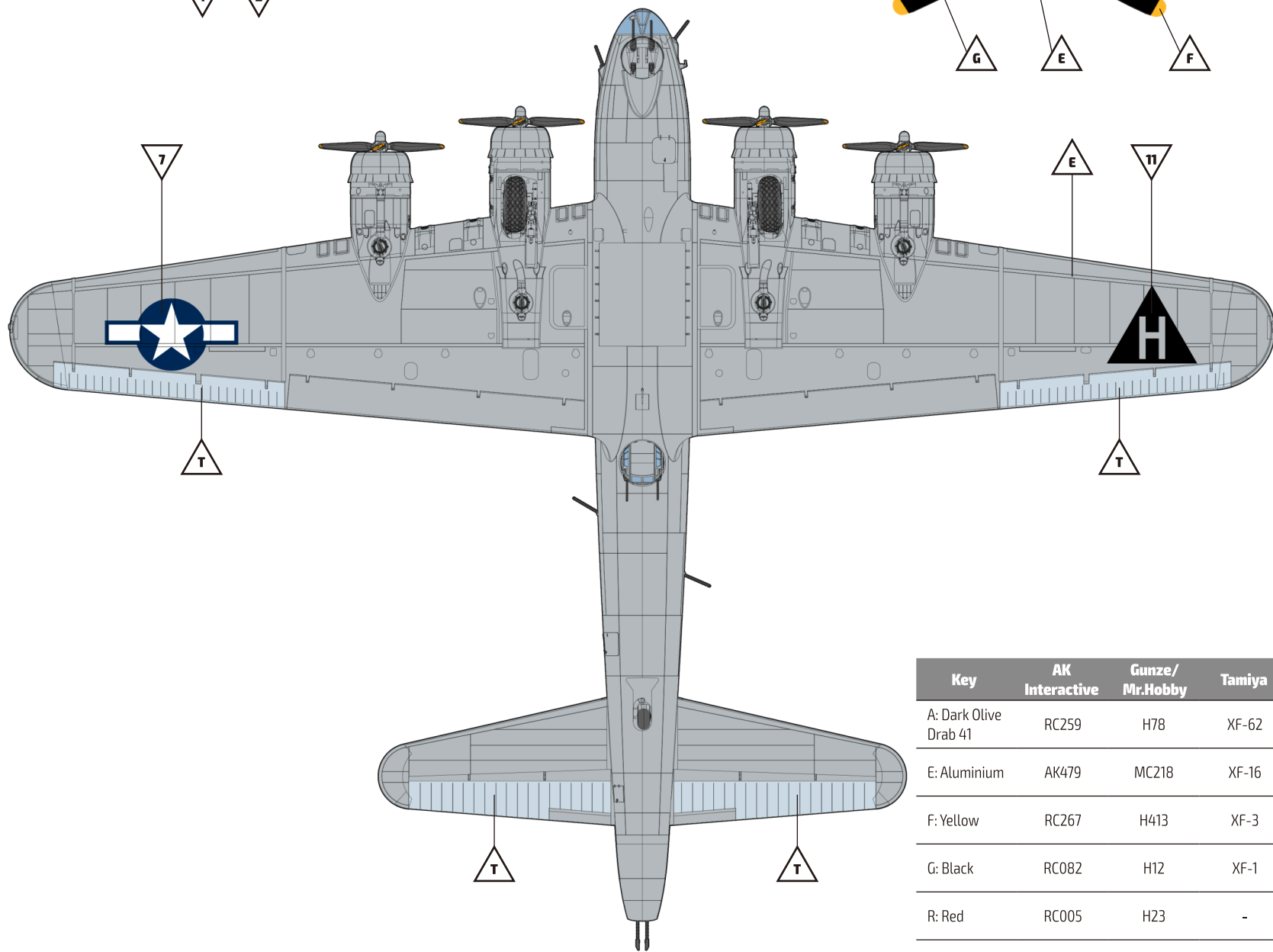
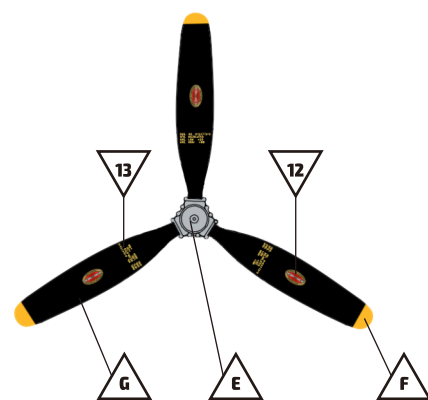
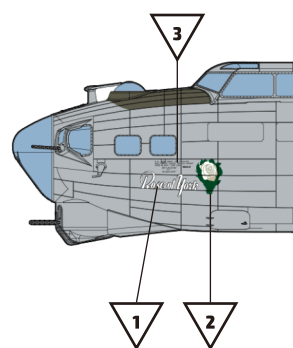
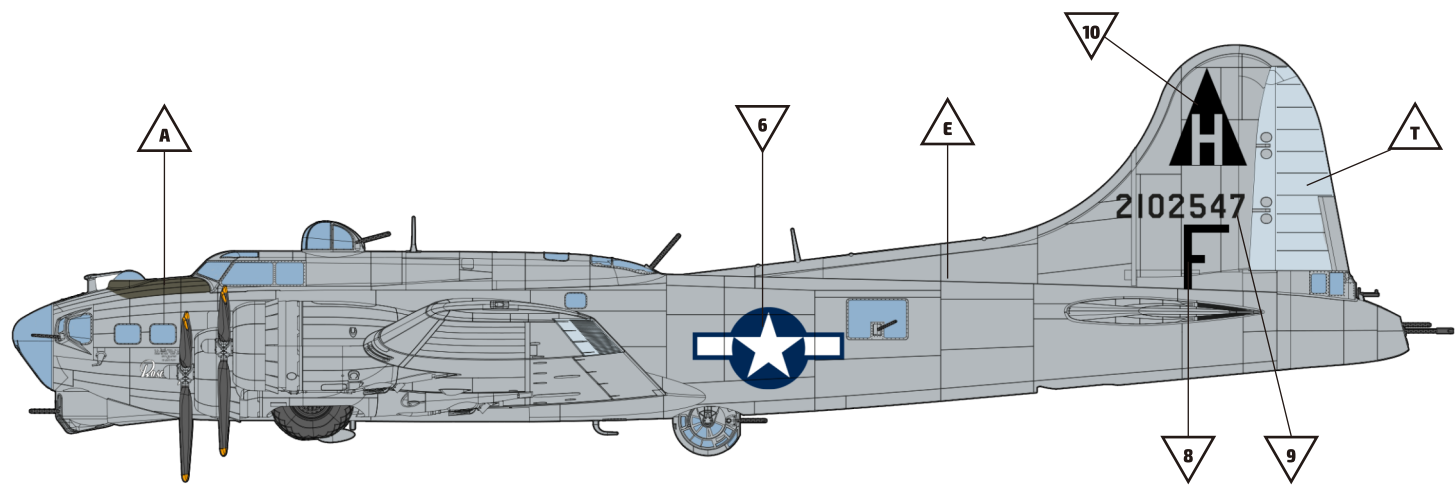




MARKING

A

B-17G-55-B0, s/n 42-102547, 367th BS / 306th BG, RAF Thurleigh, UK, 6 July 1944

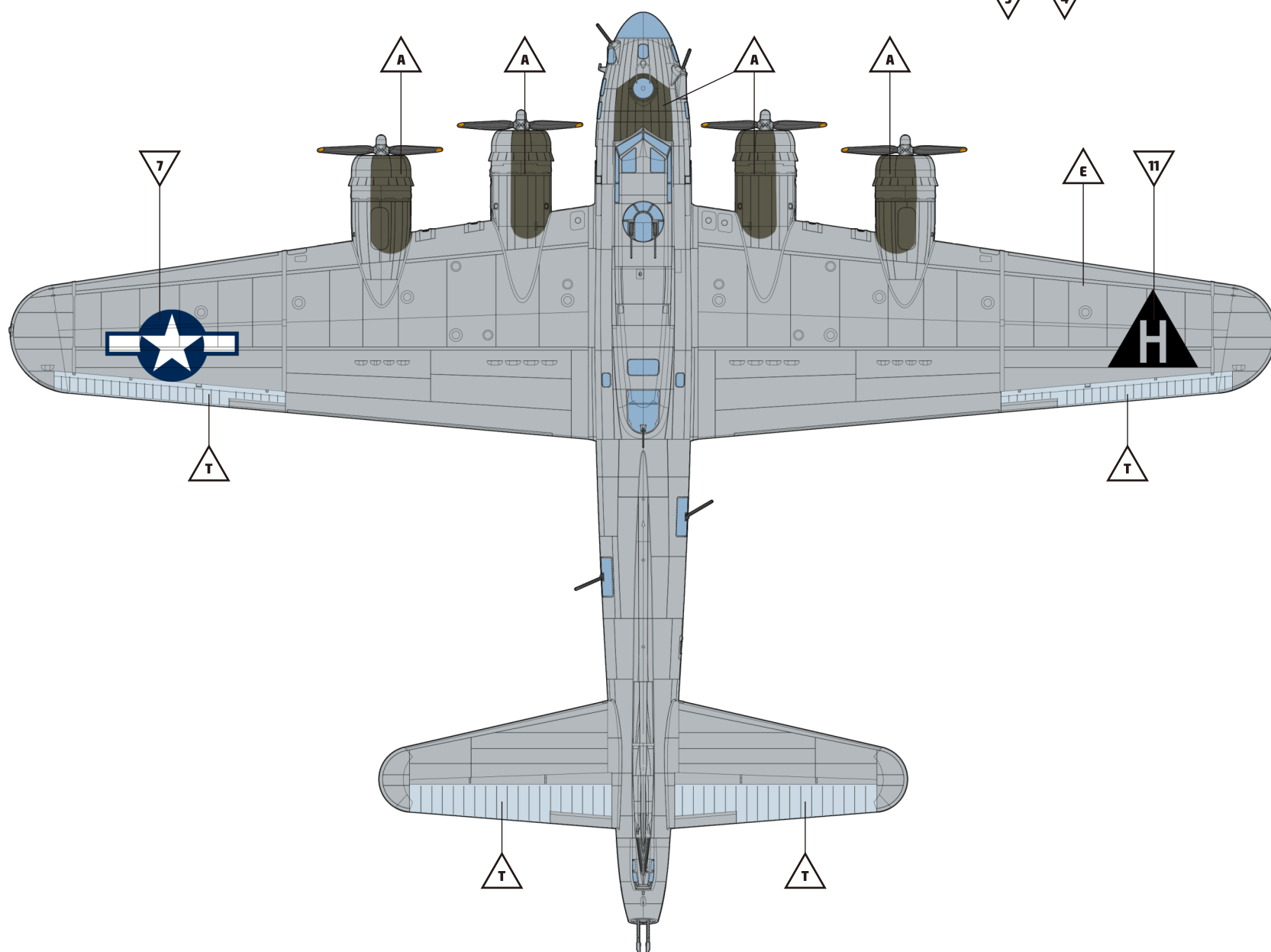
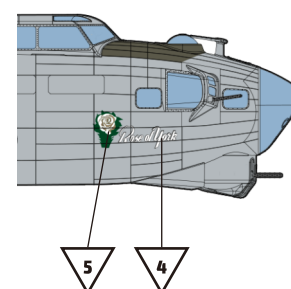
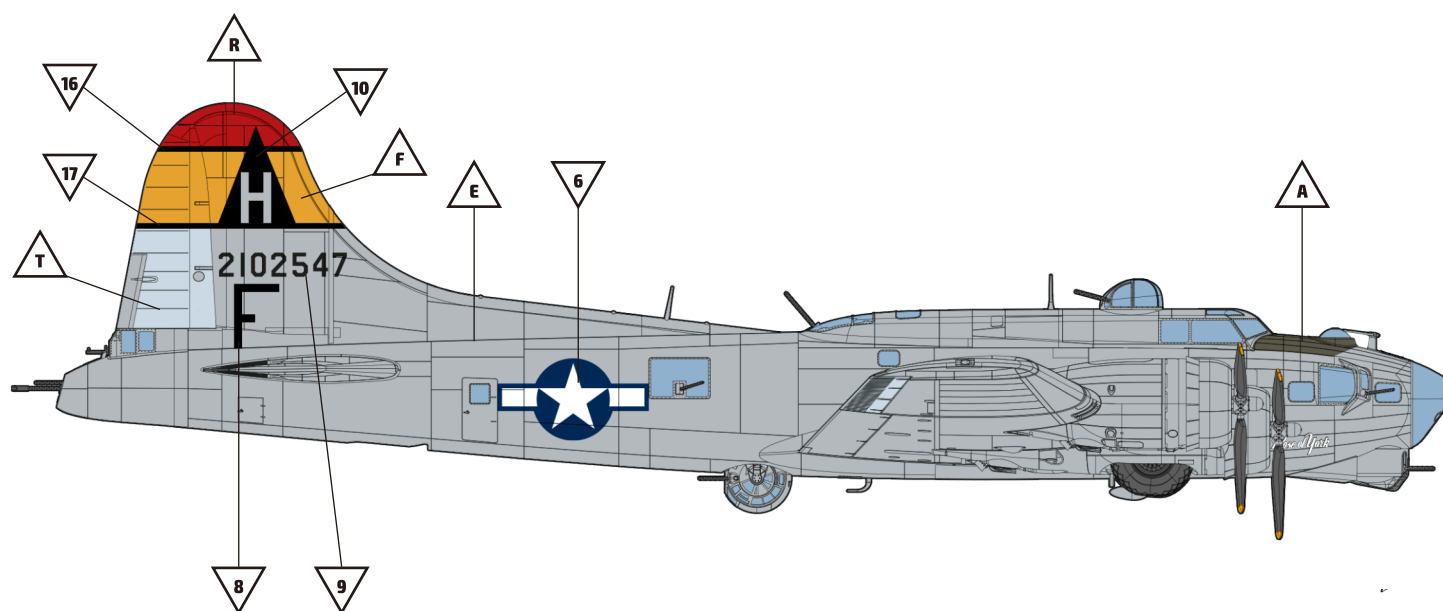


| Key                   | AK Interactive | Gunze/ Mr.Hobby | Tamiya |
|-----------------------|----------------|-----------------|--------|
| A: Dark Olive Drab 41 | RC259          | H78             | XF-62  |
| E: Aluminium          | AK479          | MC218           | XF-16  |
| F: Yellow             | RC267          | H413            | XF-3   |
| G: Black              | RC082          | H12             | XF-1   |
| R: Red                | RC005          | H23             | -      |
| T: Silver             | AK478          | H8              | X-11   |

# MARKING

B

B-17G-55-B0, s/n 42-102547, 367th BS / 306th BG, RAF Thurleigh, UK,  
after August 1944

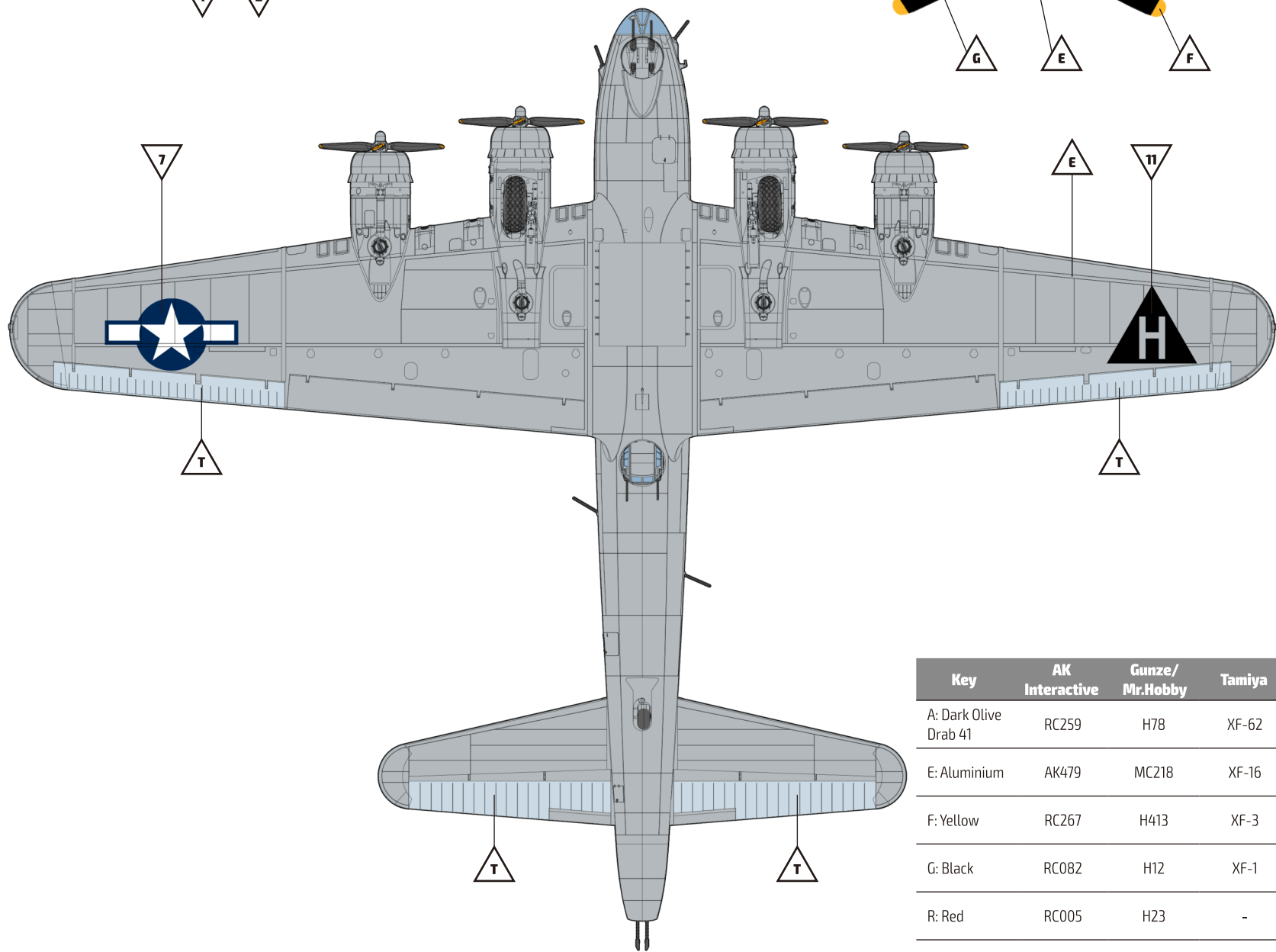
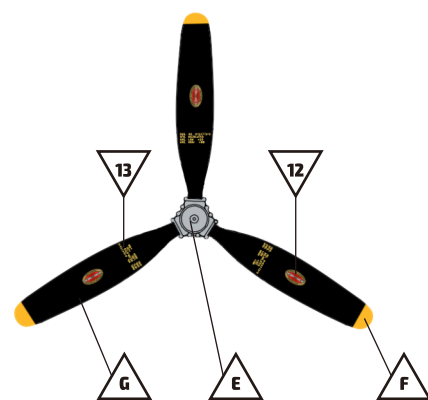
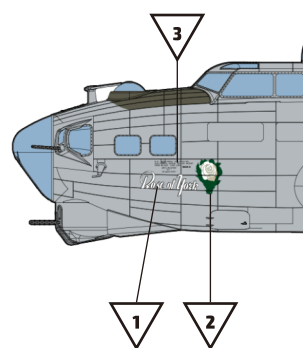
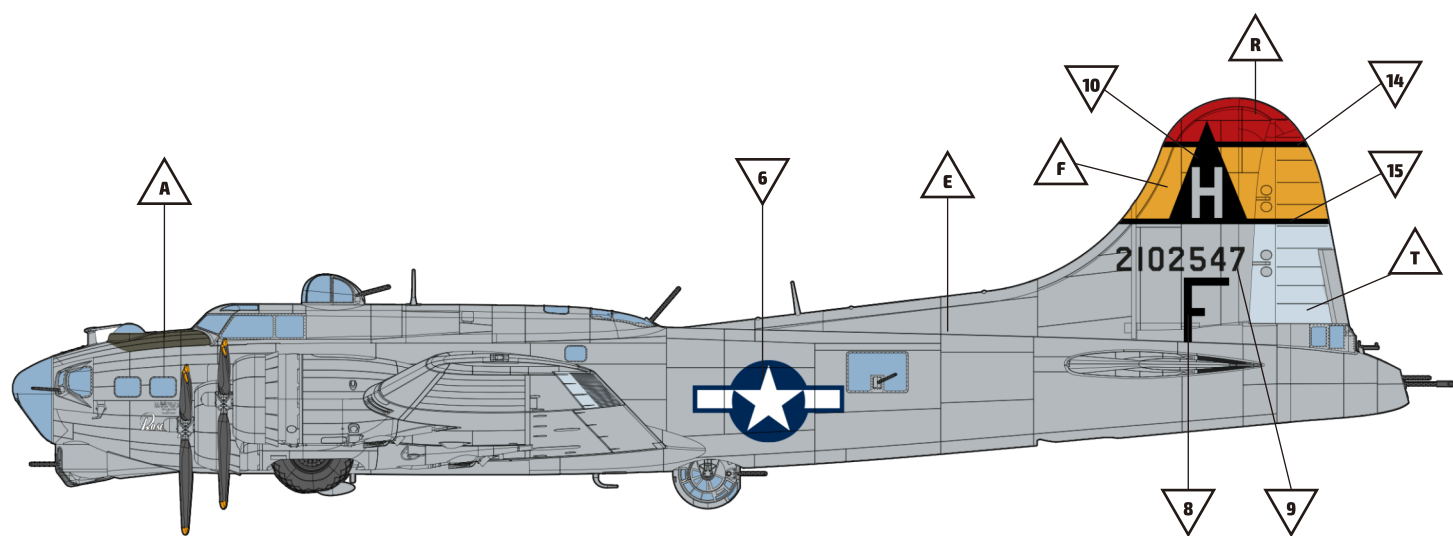




MARKING

B

B-17G-55-B0, s/n 42-102547, 367th BS / 306th BG, RAF Thurleigh, UK, after August 1944



| Key                   | AK Interactive | Gunze/ Mr.Hobby | Tamiya |
|-----------------------|----------------|-----------------|--------|
| A: Dark Olive Drab 41 | RC259          | H78             | XF-62  |
| E: Aluminium          | AK479          | MC218           | XF-16  |
| F: Yellow             | RC267          | H413            | XF-3   |
| G: Black              | RC082          | H12             | XF-1   |
| R: Red                | RC005          | H23             | -      |
| T: Silver             | AK478          | H8              | X-11   |

# Colour Guide

| Key                | AK Interactive | Gunze/Mr.Hobby | Tamiya           |
|--------------------|----------------|----------------|------------------|
| A: Olive Drab 41   | RC259          | H78            | XF-62            |
| B: Neutral Grey 43 | RC261          | H53            | XF-53            |
| C: Medium Green 42 | RC260          | -              | -                |
| D: Rubber Black    | RC022          | H77            | XF-85            |
| E: Aluminium       | AK479          | MC218          | XF-16            |
| F: Flat Yellow     | RC267          | H413           | XF-3             |
| G: Flat Black      | RC001          | H12            | XF-1             |
| H: Dull Dark Green | RC230          | H302           | XF-26            |
| I: Gunmetal        | RC015          | MC214          | X-10             |
| J: Brass           | AK475          | MC219          | X-12             |
| K: Steel           | AK476          | H18            | XF-56            |
| L: Light Wood      | RC014          | H79            | XF-78            |
| M: Grey            | RC296          | H331           | XF-77            |
| N: White           | RC004          | H11            | XF-2             |
| O: Light Green     | AK11134        | H50            | XF-71:4 + XF-2:1 |
| P: Clear Red       | RC503          | H90            | X-27             |
| Q: Clear Green     | RC505          | H94            | X-25             |

In cooperation with:



Illustration, manual layout and format: **Tomek Wajnka** & **AK-Interactive**  
Manual and assistance: **AK-Interactive**

